



Parts Replacements List

7150L

Doc. R1-7150L

Date 120607

Rev. 0

Valid from 040501 to

Rev.Date





Parts Replacements List

628628
SEAT BASE 7150

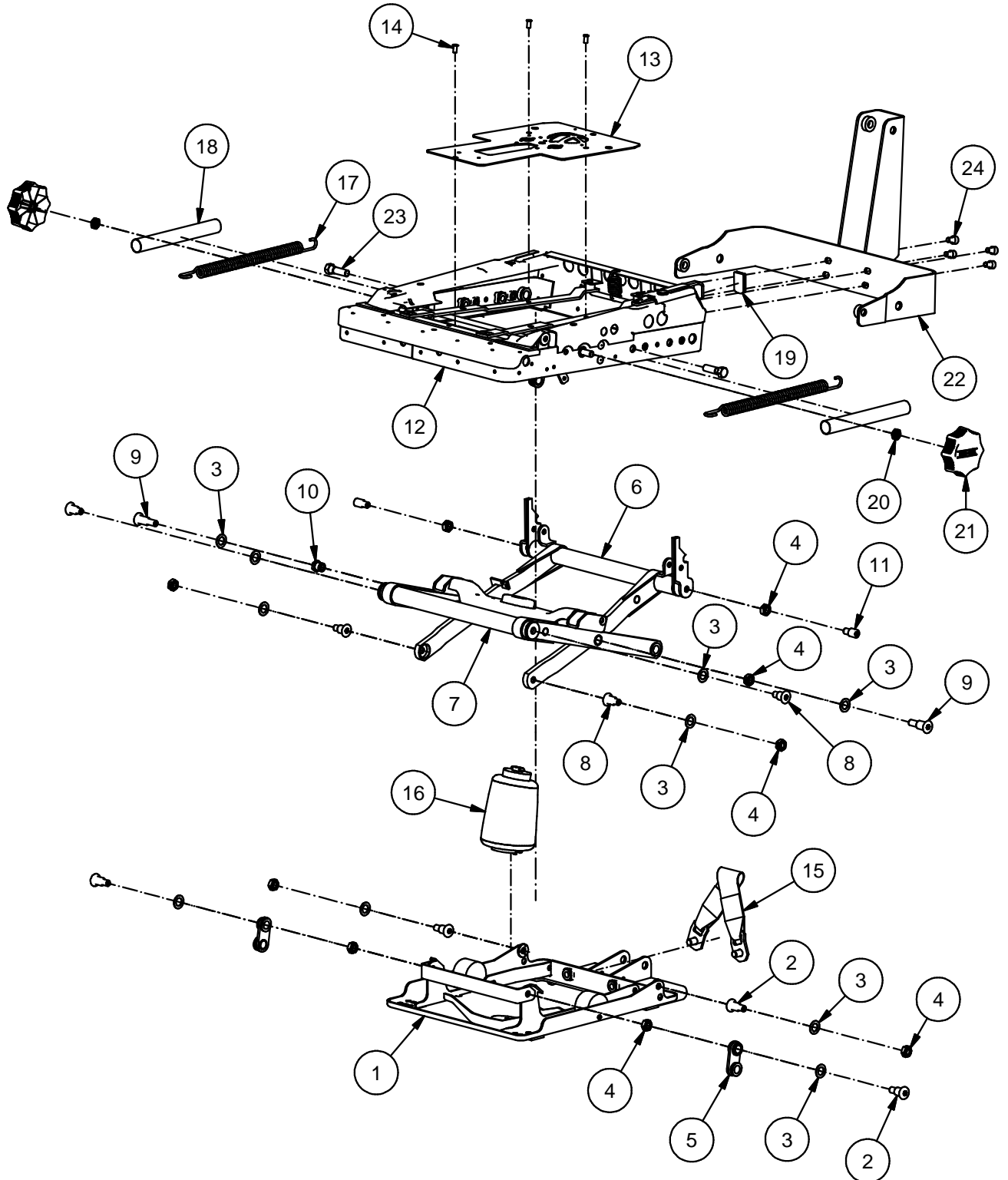
Valid from 081118 to

Doc. R1-628628

Date 120504

Rev. 0

Rev.Date





Parts Replacements List

628628
SEAT BASE 7150

Doc. R1-628628

Date 120504

Rev. 0

Valid from 081118 to

Rev.Date

Fig.	Part. No.	Quantity	Description		
1	628609	1	BOTTOMFRAME		
2	620874	4	BEARING BOLT		
3	500392	10	PLASTIC WASHER		
4	500413	9	NUT LOCK	M10	ZN K8
5	500115	2	SLEWING BRACKET		LOWER
6	621549	1	INNER SCISSOR CPL		
7	621551	1	OUTER SCISSOR CPL		
8	500393	4	BEARING BOLT		
9	500330	2	BEARING BOLT		
10	621556	1	BEARING NUT		
11	500396	2	BEARING BOLT		
12	620583P	1	SEATFRAME 7150		
13	620224	1	SEAT PLATE		
14	500223	3	RIVET AL/ST	6.0x12	AP/D BS
15	620022	1	TETHER STRAP		
16	621467	1	AIR SPRING	SZ 38-9 LS	
17	500215	2	BALANCE SPRING		
18	620852	2	INSULATING TUBE		
19	500304	1	PLASTIC KNOB		
20	210403	2	NUT ML6M	M10	DIN439/2 ZN K5
21	621408	2	HAND WHEEL M10		
22	620585	1	DAMPER BRACKET		
23	650049	2	SCREW U6S	7/16 UNFx38	ZN
24	650050	4	SCREW MC6S	M8x12	DIN912 ZN 8.8



Parts Replacements List

628641
BACKFRAME 640 BM LS RIGHT
9000

Valid from 040610 to

Doc. R1-628641

Date 120521

Rev. 0

Rev.Date

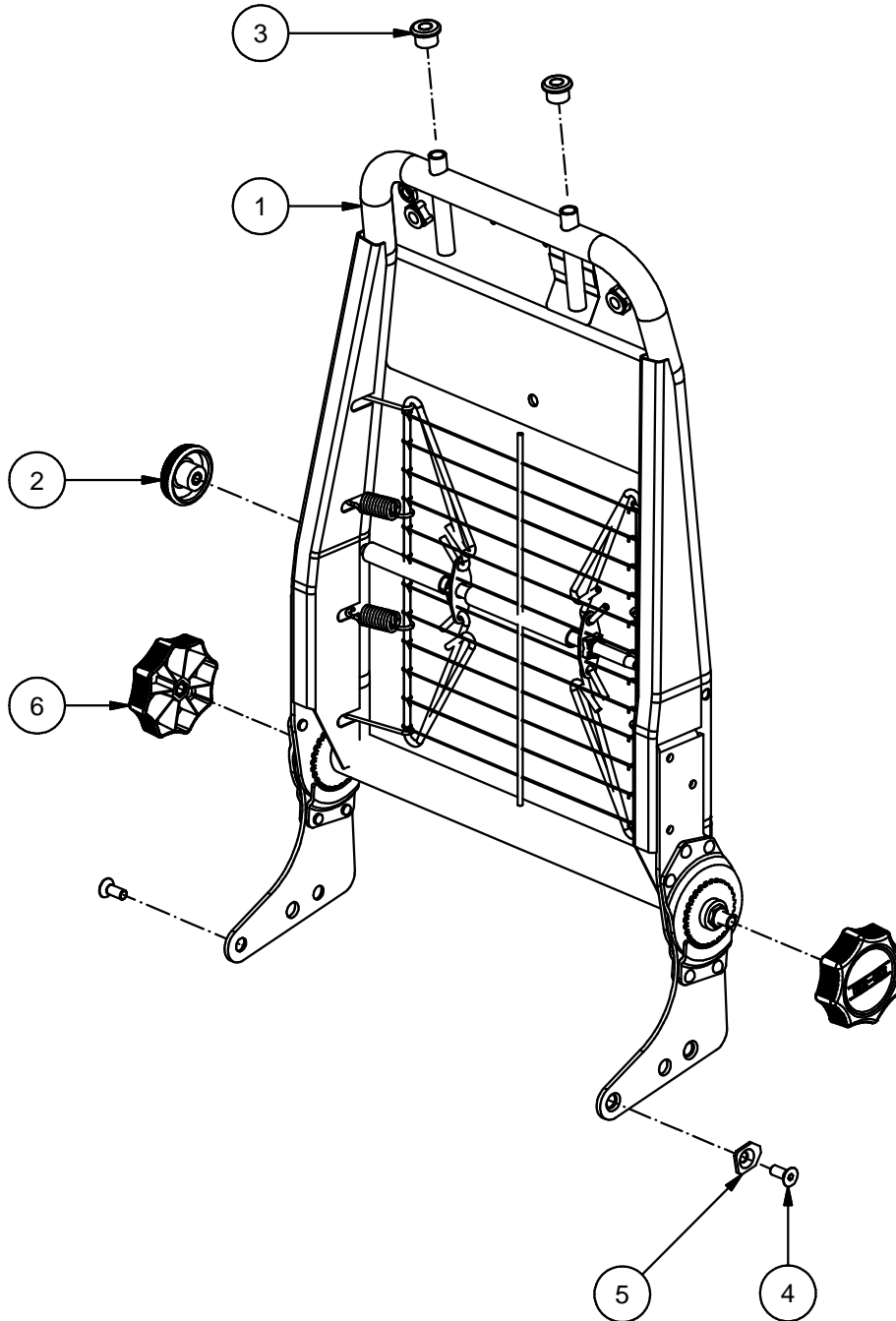


Fig.	Part. No.	Quantity	Description		
1	628639	1	BACK FRAME 640 9000		
2	500279	1	HANDWHEEL M8		
3	500385	2	HEADREST GROMMET		
4	310930	2	SCREW MF6S	M8x20	DIN7991 ZN-BL 10.9
5	620143	1	EXCENTER WASHER		
6	621408	2	HAND WHEEL M10		



Parts Replacements List

628643

**BACKFRAME 640 BM 4-WAY LS
7150**

Valid from 040610 to

Doc. R1-628643

Date 120522

Rev. 0

Rev.Date

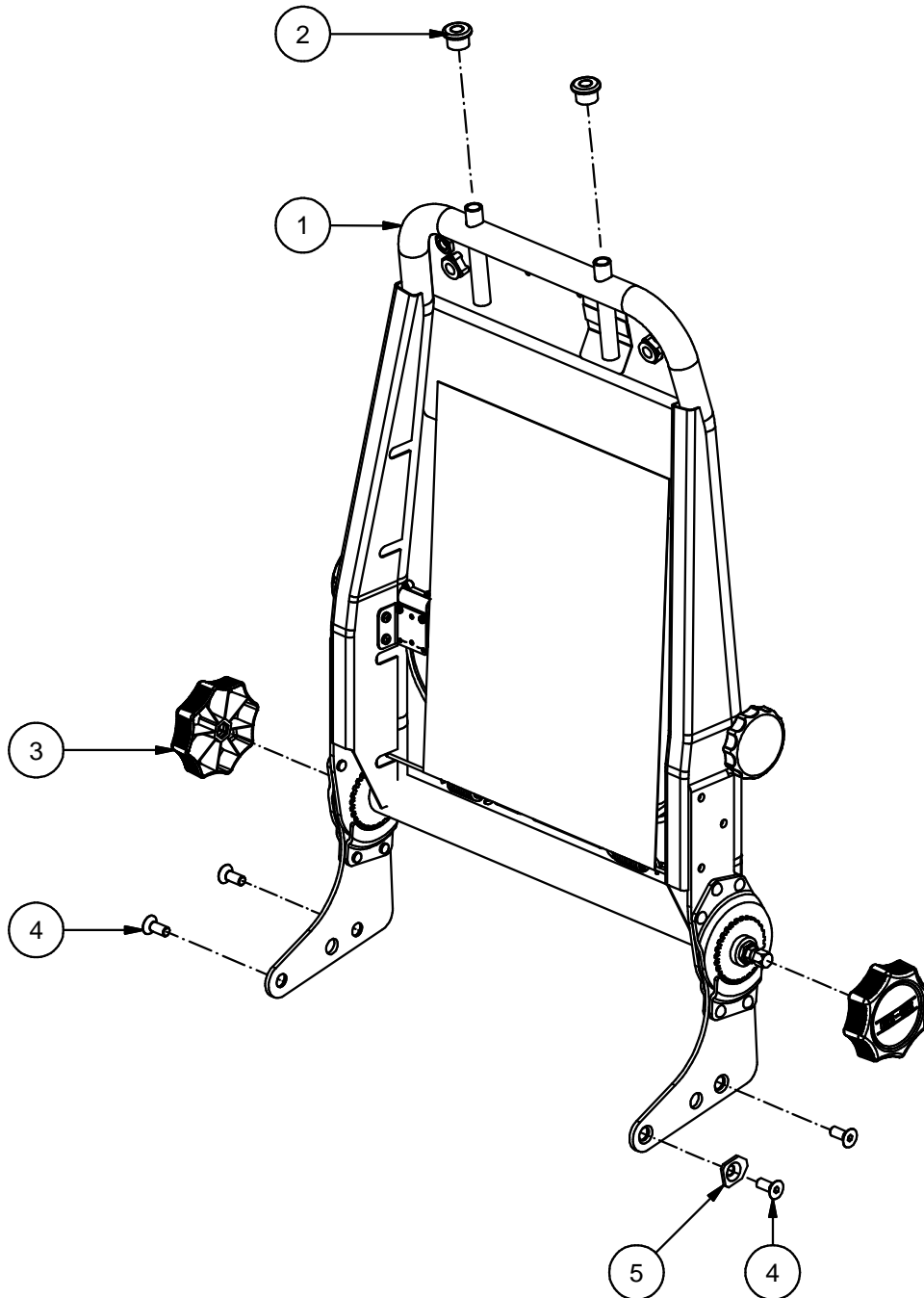


Fig.	Part. No.	Quantity	Description		
1	628642	1	BACKREST ASM 640 9000		
2	500385	2	HEADREST GROMMET		
3	621408	2	HAND WHEEL M10		
4	310930	4	SCREW MF6S	M8x20	DIN7991 ZN-BL 10.9
5	620143	1	EXCENTER WASHER		



Parts Replacements List

628927

**BACKREST 640QR BM (RIGHT LUMBAR SUPPORT)
9000**

Valid from 051207 to

Doc. R1-628927

Date 120309

Rev. 0

Rev.Date

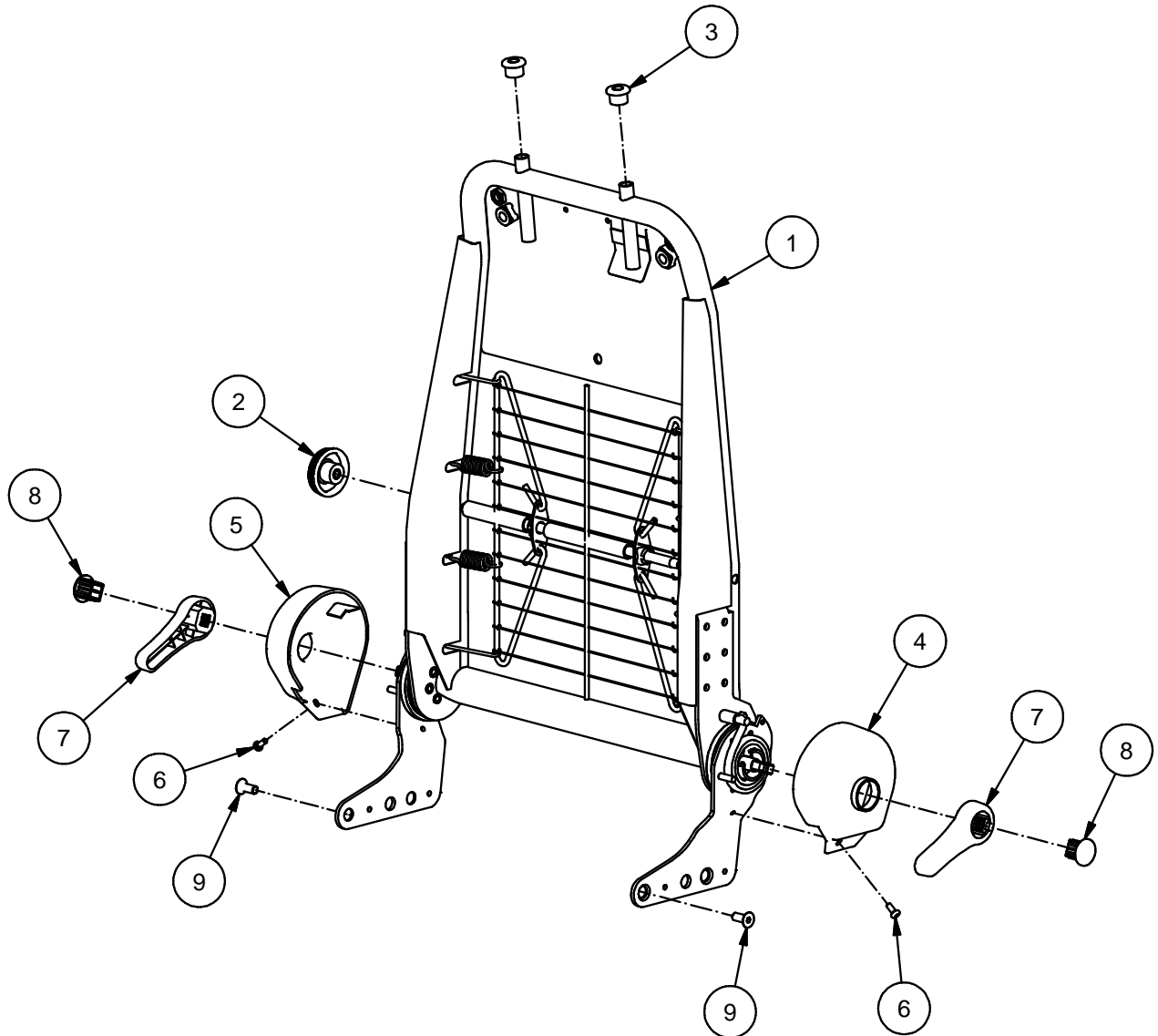


Fig.	Part. No.	Quantity	Description		
1	628925	1	BACKFRAM 640 QR		
2	500279	1	HANDWHEEL M8		
3	500385	2	HEADREST GROMMET		
4	628831	1	COVER LEFT		
5	628832	1	COVER RIGHT		
6	650126	2	SCREW MRT-TT	M5x12	ISO7045 ZN BLACK
7	628833	2	GRIP		
8	628834	2	CAP GRIP		
9	310930	2	SCREW MF6S	M8x20	DIN7991 ZN-BL 10.9



Parts Replacements List

628631
SHOCK ABSORBER
7150

Valid from 040525 to

Doc. R1-628631

Date 110523

Rev. 0

Rev.Date

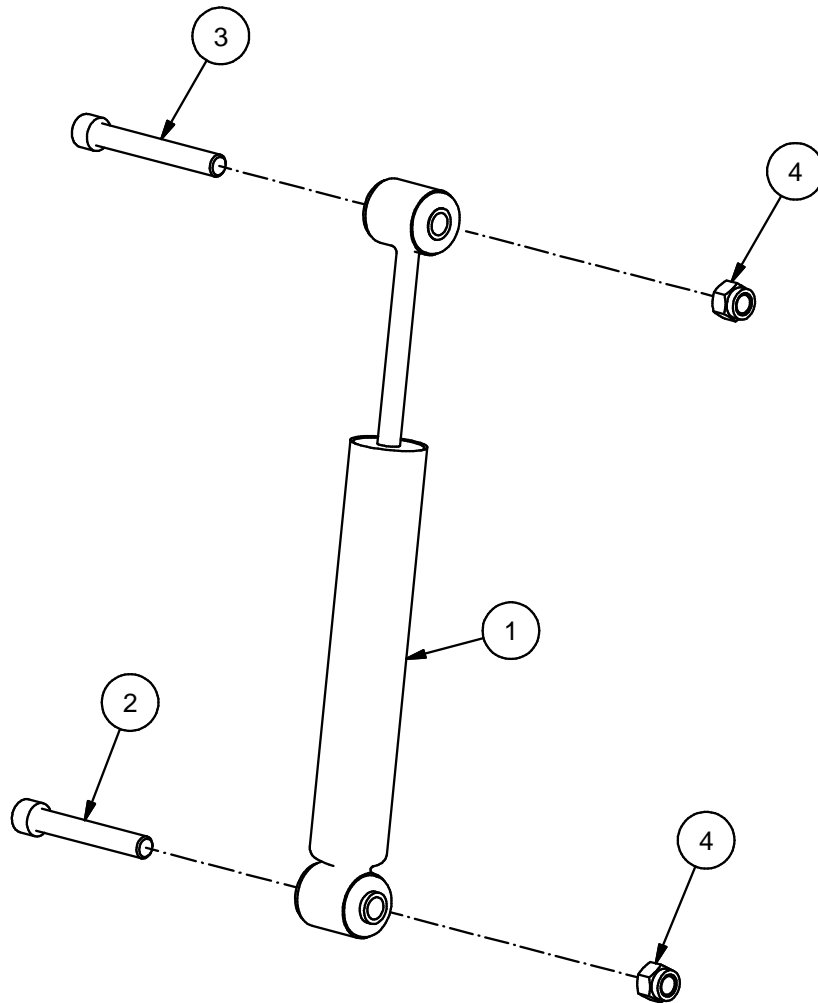


Fig.	Part. No.	Quantity	Description		
1	621477	1	SHOCK ABSORBER		KONI
2	650047	1	SCREW MC6S	M12x80	DIN912 ZN 8.8
3	650048	1	SCREW MC6S	M12x90	DIN912 ZN 8.8
4	651015	2	NUT LOCK-NYLON	M12	DIN6924 ZN K8



Parts Replacements List

628632
SHOCK ABSORBER FIRM
7150

Valid from 040525 to

Doc. R1-628632

Date 120522

Rev. 0

Rev.Date

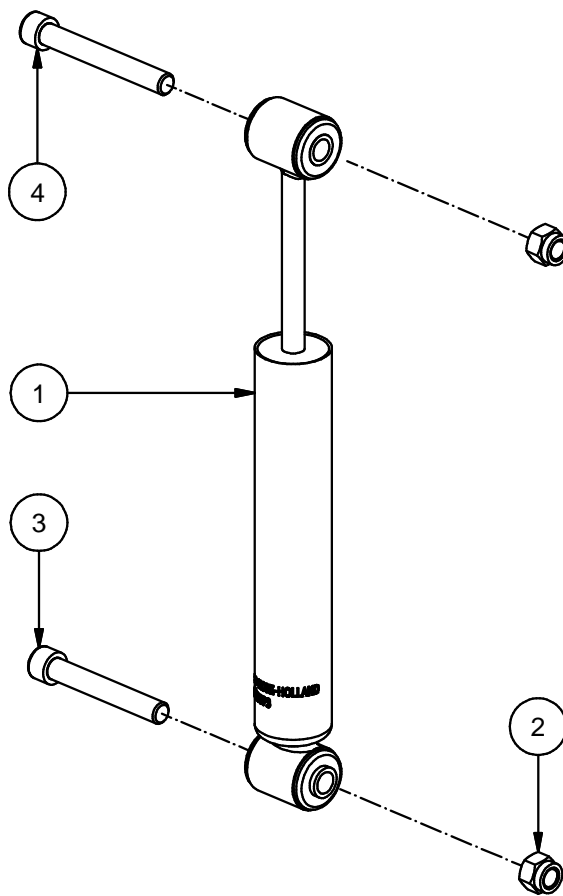


Fig.	Part. No.	Quantity	Description		
1	660142	1	SHOCK ABSORBER		KONI
2	651015	2	NUT LOCK-NYLON	M12	DIN6924 ZN K8
3	650047	1	SCREW MC6S	M12x80	DIN912 ZN 8.8
4	650048	1	SCREW MC6S	M12x90	DIN912 ZN 8.8



Parts Replacements List

621644
EQUIPMENT KIT AIRVENT LEFT
7100

Valid from 011214 to

Doc. R1-621644

Date 120607

Rev. 0

Rev.Date

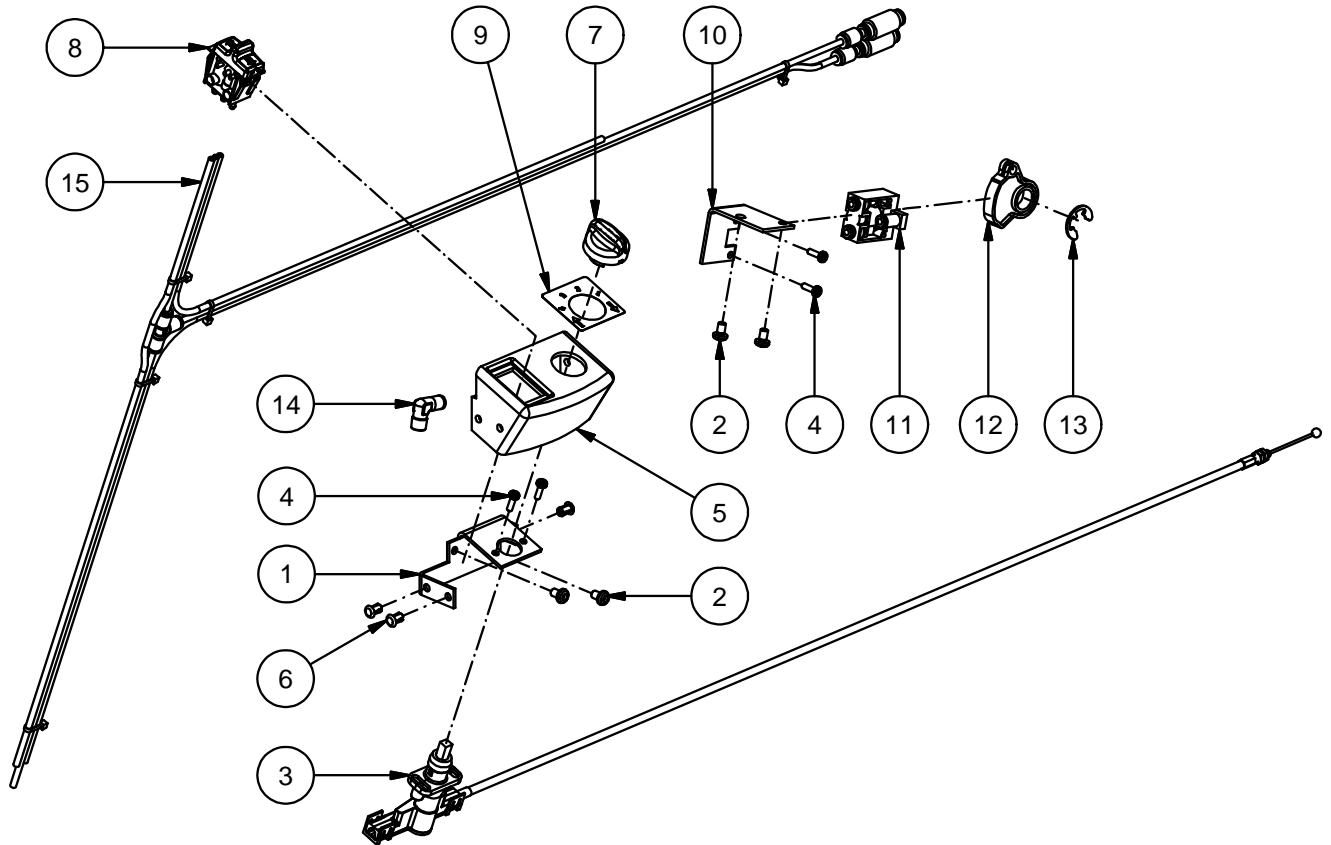


Fig.	Part. No.	Quantity	Description		
1	621559	1	BRACKET LEFT		
2	650088	4	SCREW MRT-TT	M5x8	ISO7045 ZN
3	621557	1	HEIGHT CONTROL LEFT		
4	650095	4	SCREW WN 156-3	M4x12	ZN
5	621561	1	COVER LEFT		
6	653008	3	RIVET PLASTIC	D=5 L=9.2	BLACK
7	621564	1	WHEEL HEIGHT CONTROL		
8	621510	1	QUICK LOWERING VALVE		
9	622701	1	DECAL LEFT		
10	621555	1	BRACKET 3/2 VALVE		
11	628539	1	VALVE 3/2		
12	628538	1	CAM CONTROL		
13	652031	1	RETAINING RING	RS12	DIN6799
14	660397	1	ONE TOUCH FITTING ELBOW	4-1/8	
15	622715	1	TUBE ASM 7100		
16	500317	3	CABLE TIE	200x4.6	- Not in picture -



Parts Replacements List

628624

EQUIPMENT KIT AIRVENT LEFT

7100 PM

Valid from 040517 to

Doc. R1-628624

Date 120607

Rev. 0

Rev.Date

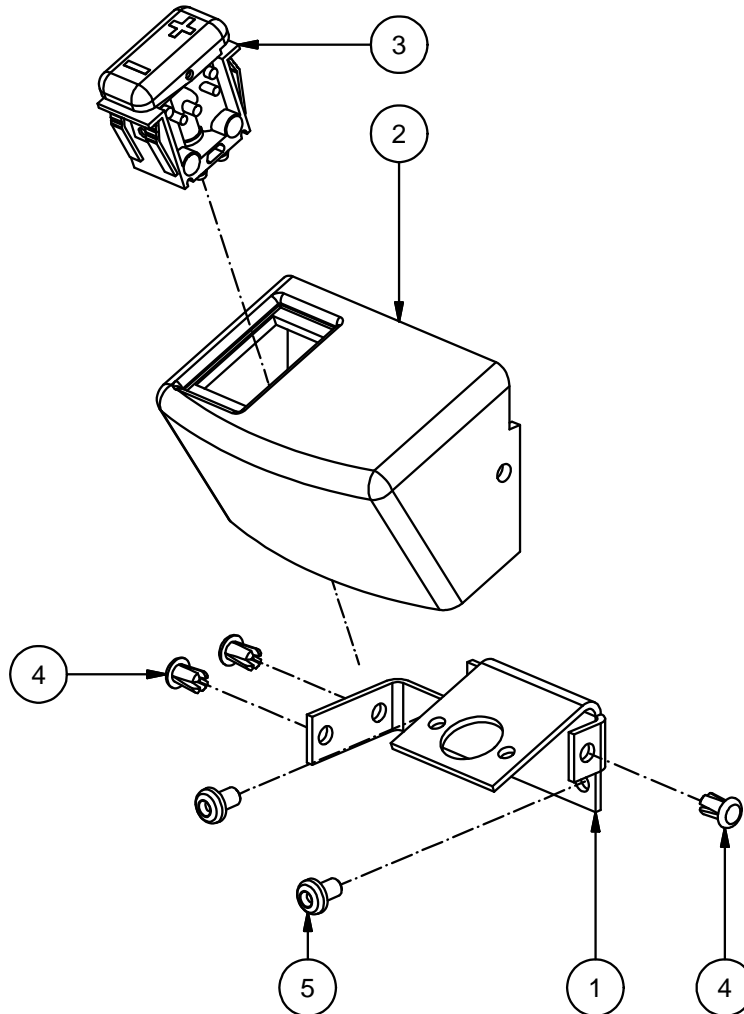


Fig.	Part. No.	Quantity	Description		
1	621559	1	BRACKET LEFT		
2	628623	1	COVER HEIGHT CONTROL LEFT		
3	628158	1	PLUS/MINUS VALVE		
4	653008	3	RIVET PLASTIC	D=5 L=9.2	BLACK
5	650088	2	SCREW MRT-TT	M5x8	ISO7045 ZN
6	660397	1	ONE TOUCH FITTING ELBOW	4-1/8	- Not in picture -
7	500317	3	CABLE TIE	200x4.6	- Not in picture -
8	660425	1	TUBE 4x2,5 BLACK		- Not in picture -
9	660460	1	SLIP IN COUPLING	4-6	- Not in picture -



Parts Replacements List

621340

Belt 3"

7150

Doc. R1-621340

Date 120522

Rev. 0

Valid from 010606 to

Rev.Date

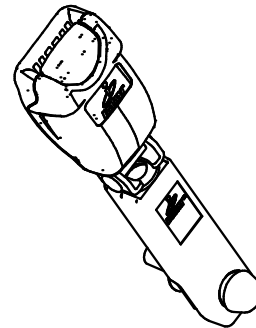
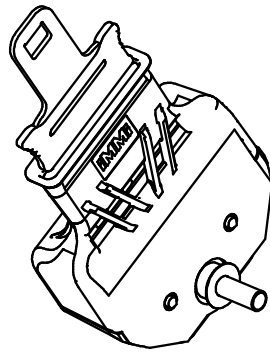


Fig.	Part. No.	Quantity	Description
1	621340	1	BELT 3"



Parts Replacements List

603101

SLIDE KIT 2P-BELT 14 BALLS

Doc. R1-603101

Date 120509

Rev. 0

Valid from 040510 to

Rev.Date

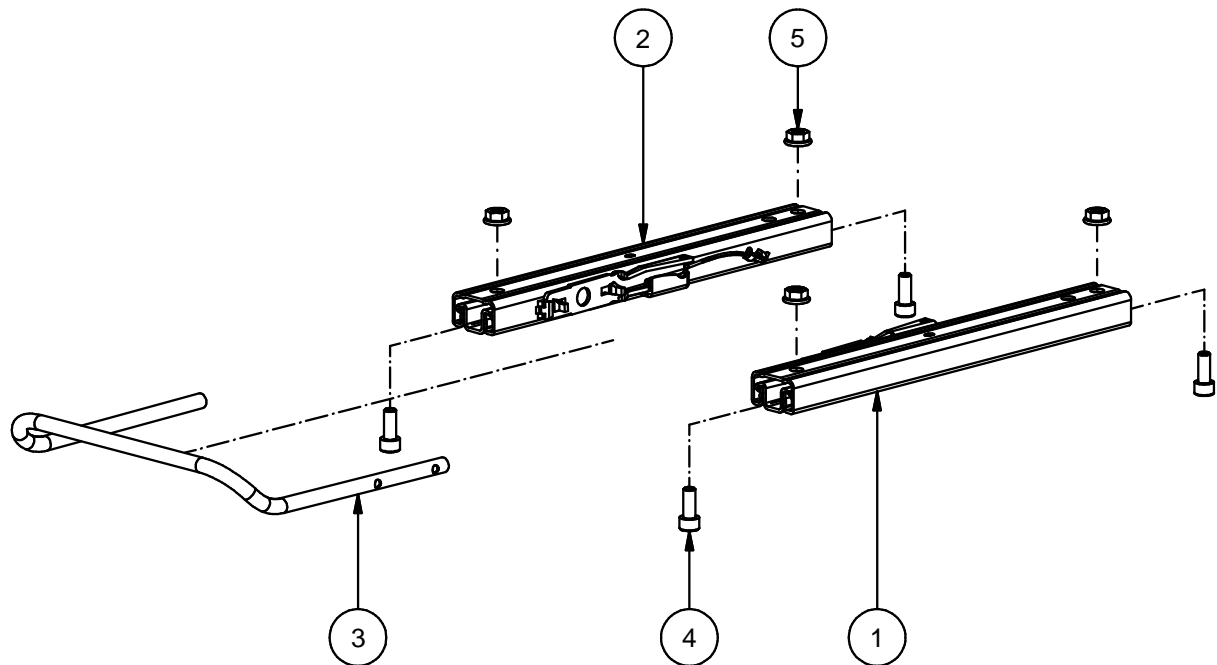


Fig.	Part. No.	Quantity	Description		
1	621609	1	SLIDE RAIL LEFT	14 BALLS	
2	621610	1	SLIDE RAIL RIGHT	14 BALLS	
3	620093	1	CLAMP BELT SEAT		
4	500302	4	SCREW MC6S	M8x20	DIN912 ZN 8.8
5	651054	4	NUT TENSIFLANGE	M8	DIN6923 ZN K8



Parts Replacements List

500160
PROTECTIVE BELLOWS
9000

Valid from 840101 to

Doc. R1-500160

Date 080610

Rev.

Rev.Date

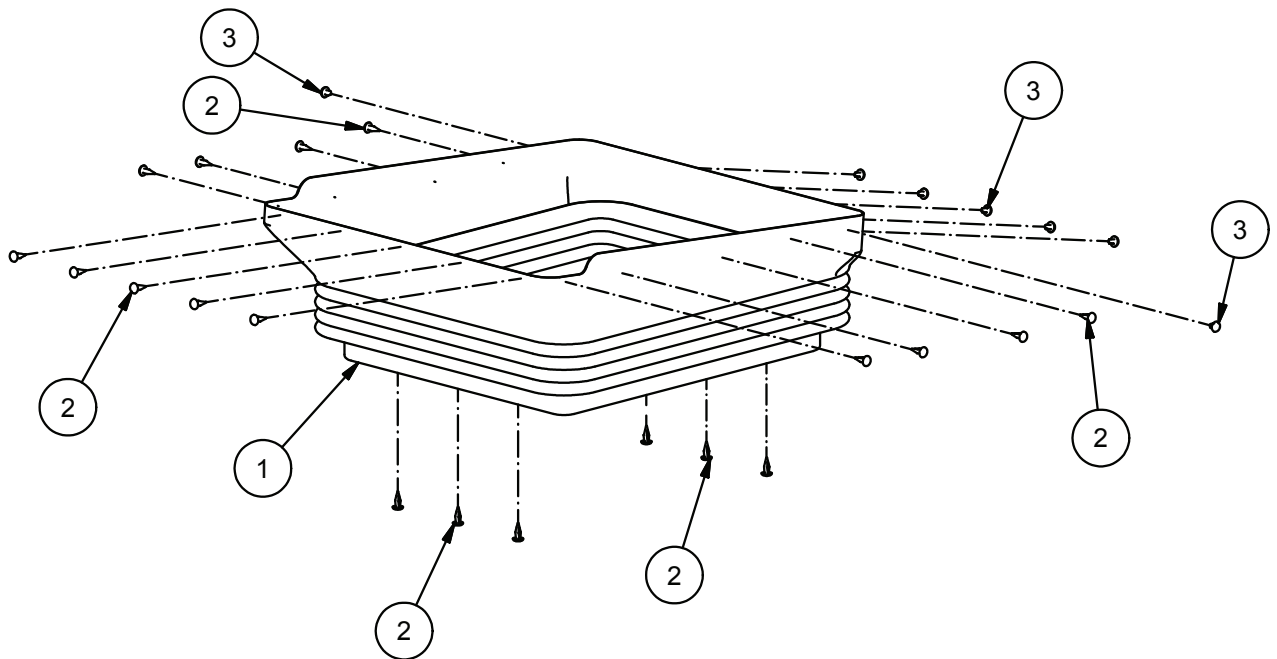


Fig.	Part. No.	Quantity	Description
1	501460	1	PROTECTIVE BELLOWS
2	500214	19	PLASTIC RIVET
3	629007	7	PLASTIC RIVET



Parts Replacements List

628640

INCLINATION STOP BACKREST

9000 BELT SEAT

Valid from 040610 to

Doc. R1-628640

Date 110428

Rev. 0

Rev.Date

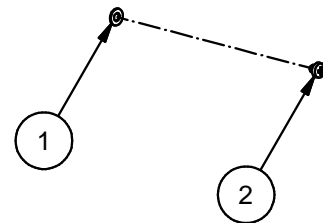
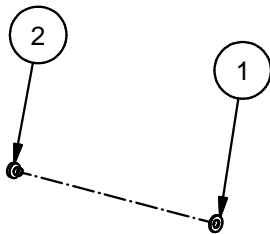


Fig.	Part. No.	Quantity	Description		
1	652007	2	WASHER BRB	4.3x8x0.8	DIN125 ZN BLACK
2	650122	2	SCREW MRX	M4x4	DIN7985 ZN BLACK



Parts Replacements List

603134
INCLINATION STOP 10° CPL
7150

Valid from 090101 to

Doc. R1-603134

Date 090101

Rev.

Rev.Date

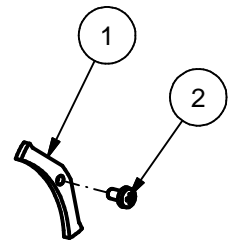
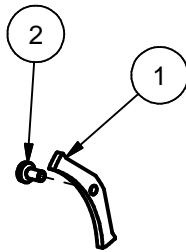


Fig.	Part. No.	Quantity	Description		
1	629616	2	INCLINATION STOP 10°		
2	650008	2	SCREW MRX-TT	M4x8	DIN 7500 ZN BLACK



Parts Replacements List

628571
TRIM KIT SEAT CUSHION NIGHTFALL
9000

Valid from 040501 to

Doc. R1-628571

Date 081124

Rev.

Rev.Date

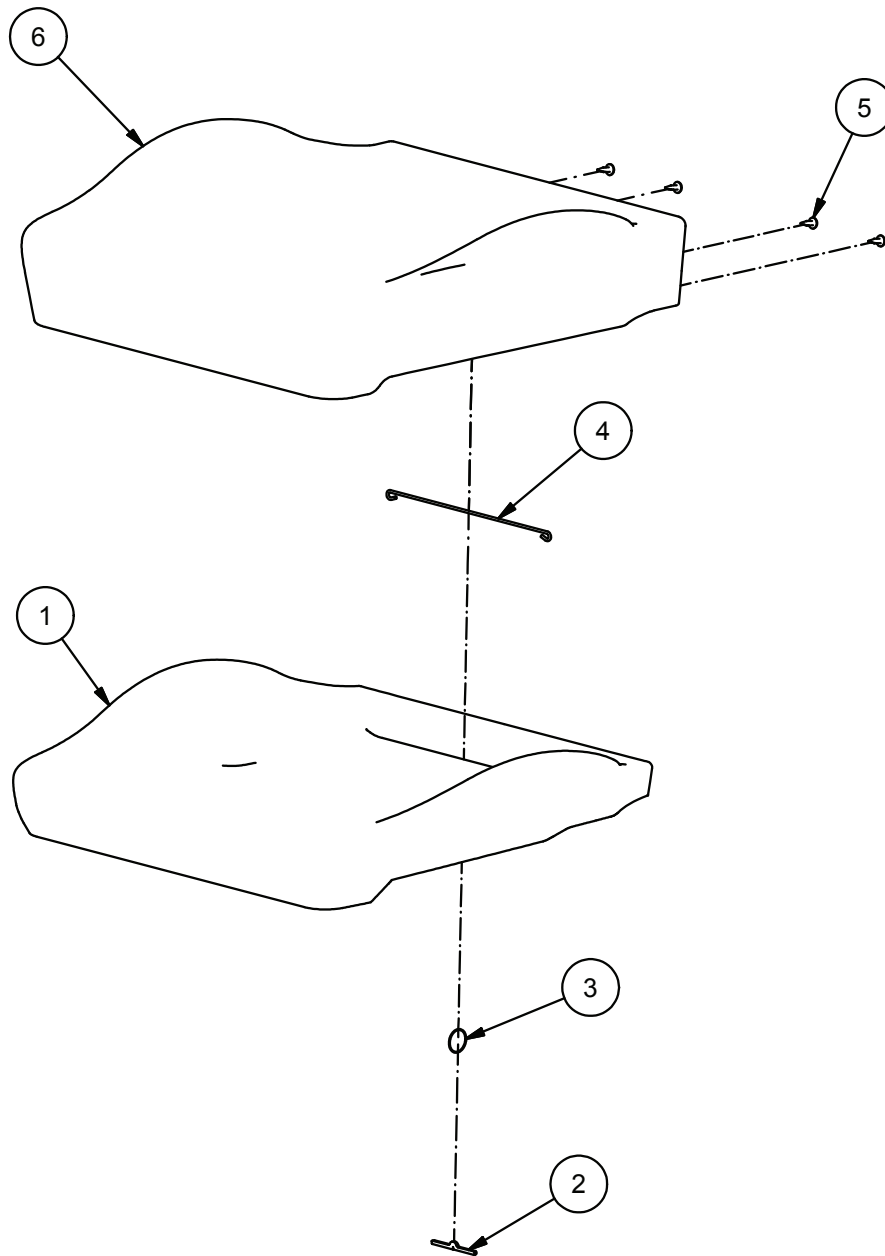


Fig.	Part. No.	Quantity	Description
1	500190	1	FOAM CUSHION
2	621404	1	BARETT PIN
3	660057	1	LOOPS 30 MM
4	620140	1	BRACKET L=230
5	500214	4	PLASTIC RIVET
6	641329	1	TRIM CUSHION

NIGHTFALL



Parts Replacements List

628572

TRIM KIT SEAT CUSHION CT NIGHTFALL

9000

Valid from 040501 to

Doc. R1-628572

Date 110428

Rev. 0

Rev.Date

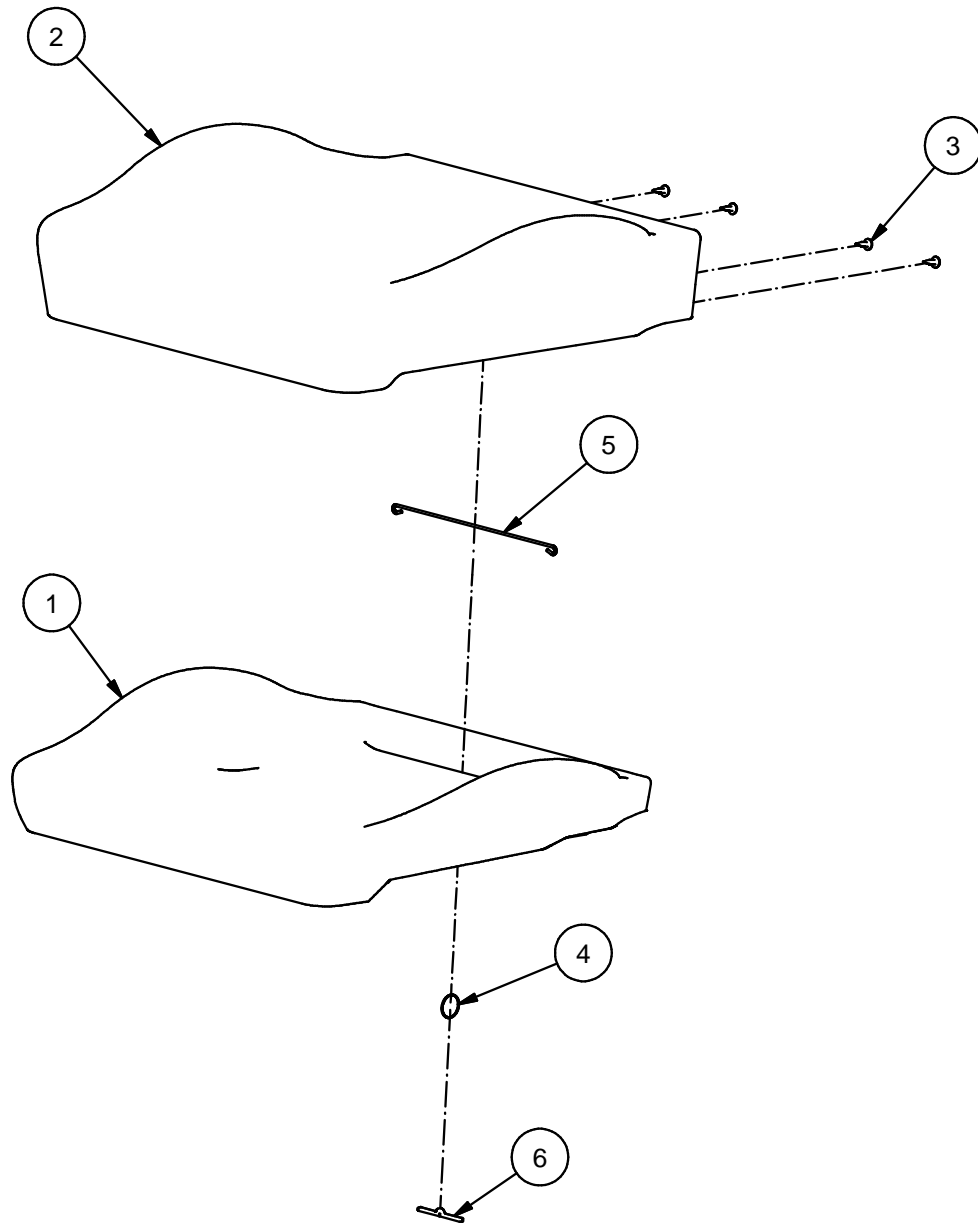


Fig.	Part. No.	Quantity	Description
1	500189	1	FOAM CUSHION
2	641329	1	TRIM CUSHION
3	500214	4	PLASTIC RIVET
4	660057	1	LOOPS 30 MM
5	620140	1	BRACKET L=230
6	621404	1	BARETT PIN



Parts Replacements List

628574

**TRIM KIT SEAT EPN NIGHTFALL
7130LC4**

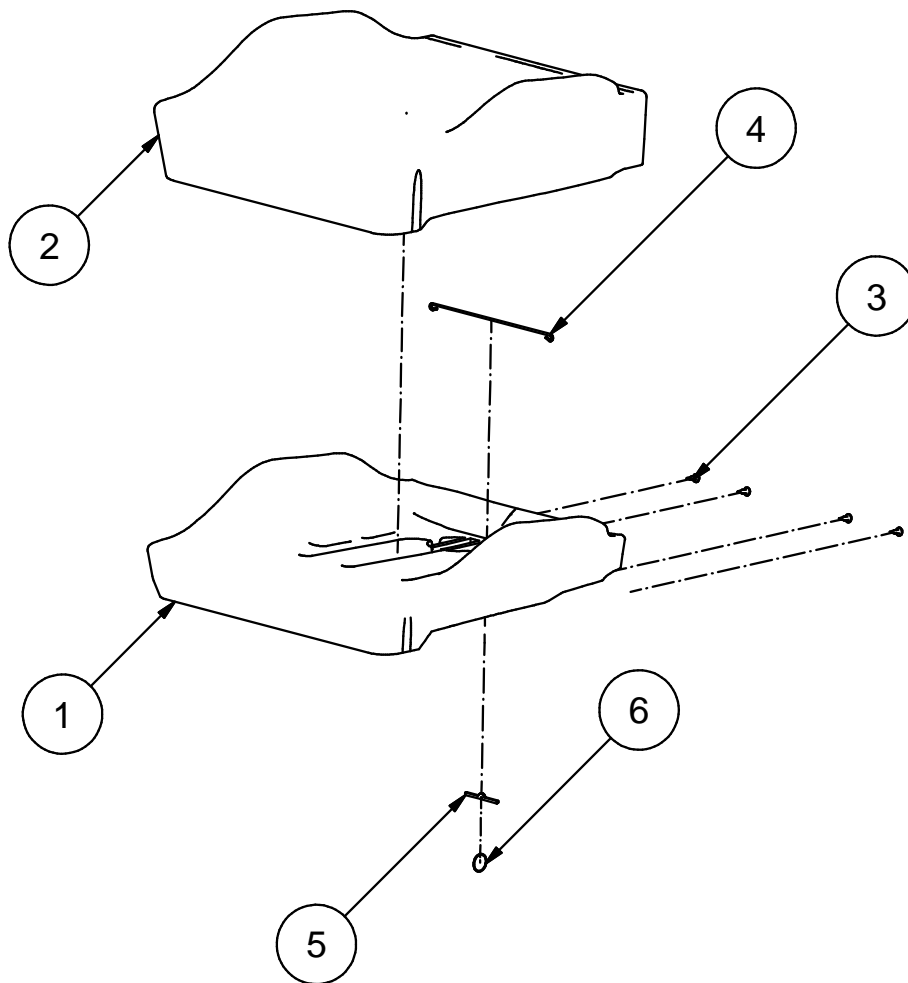
Valid from 110302 to

Doc. R1-628574

Date 110302

Rev. 0

Rev.Date



1	621388	1	FOAM CUSHION		
2	641330	1	TRIM SEAT		
3	500214	4	PLASTIC RIVET		
4	620140	1	BRACKET L=230		
5	621404	1	BARRET PIN		
6	660057	1	LOOPS 30MM		



Parts Replacements List

620313

**TRIM KIT SEAT CUSHION ART. LEATHER GREY
9000**

Valid from 900810 to

Doc. R1-620313

Date 120509

Rev. 0

Rev.Date

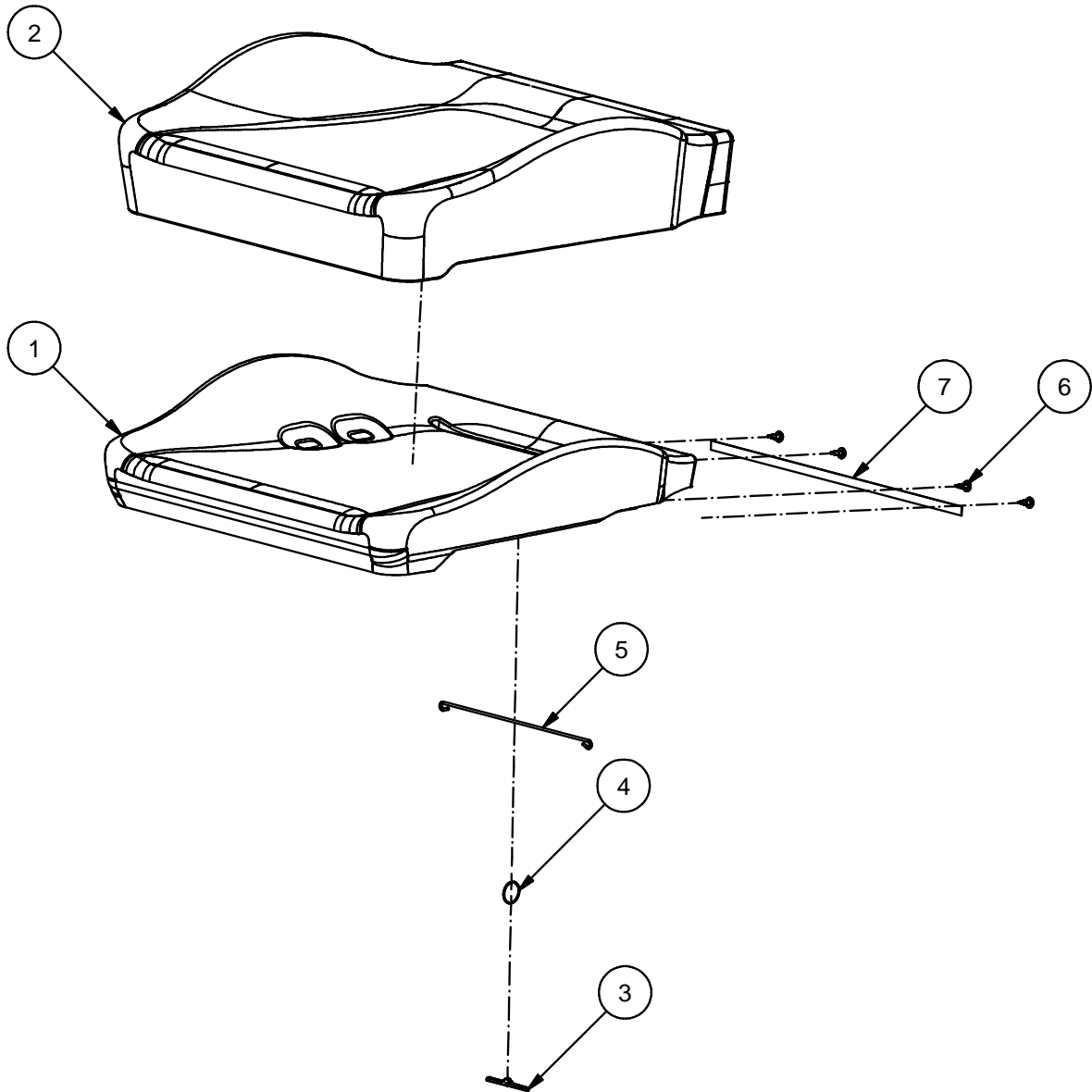


Fig.	Part. No.	Quantity	Description		
1	500190	1	FOAM CUSHION		
2	500958	1	TRIM CUSHION		ART. LEATHER GREY
3	621404	1	BARETT PIN		
4	660057	1	LOOPS 30 MM		
5	620140	1	BRACKET L=230		
6	500214	4	PLASTIC RIVET		
7	500281	1	PLASTIC STRIP		



Parts Replacements List

620319

**TRIM KIT SEAT CUSHION CT ART. LEA. GREY
9000**

Valid from 900810 to

Doc. R1-620319

Date 120509

Rev. 0

Rev.Date

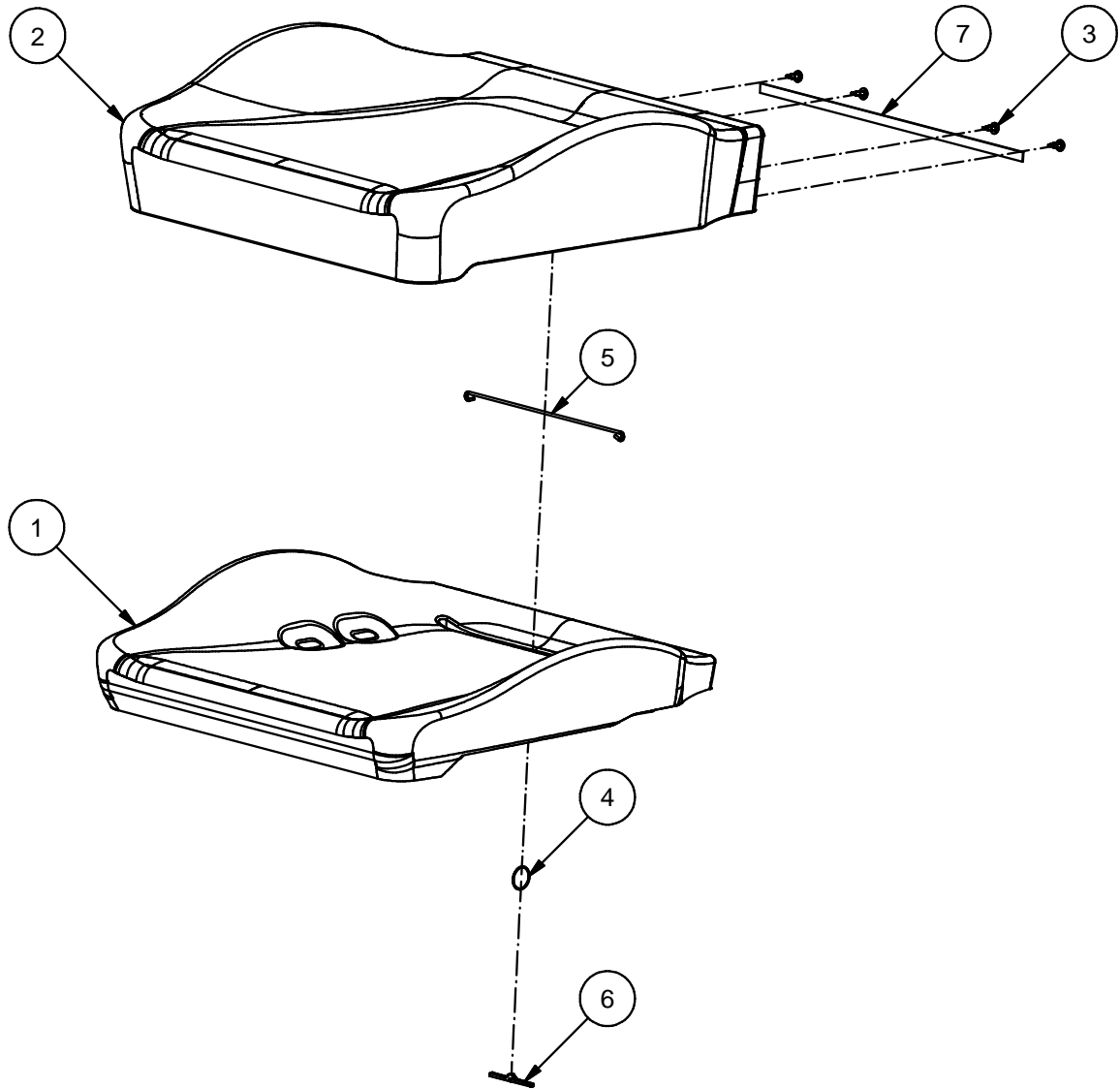


Fig.	Part. No.	Quantity	Description		
1	500189	1	FOAM CUSHION		
2	500958	1	TRIM CUSHION		ART. LEATHER GREY
3	500214	4	PLASTIC RIVET		
4	660057	1	LOOPS 30 MM		
5	620140	1	BRACKET L=230		
6	621404	1	BARETT PIN		
7	500281	1	PLASTIC STRIP		



Parts Replacements List

620903

**TRIM KIT SEAT CUSHION PLUSH BLUE 84
9000**

Valid from 930208 to

Doc. R1-620903

Date 120509

Rev. 0

Rev.Date

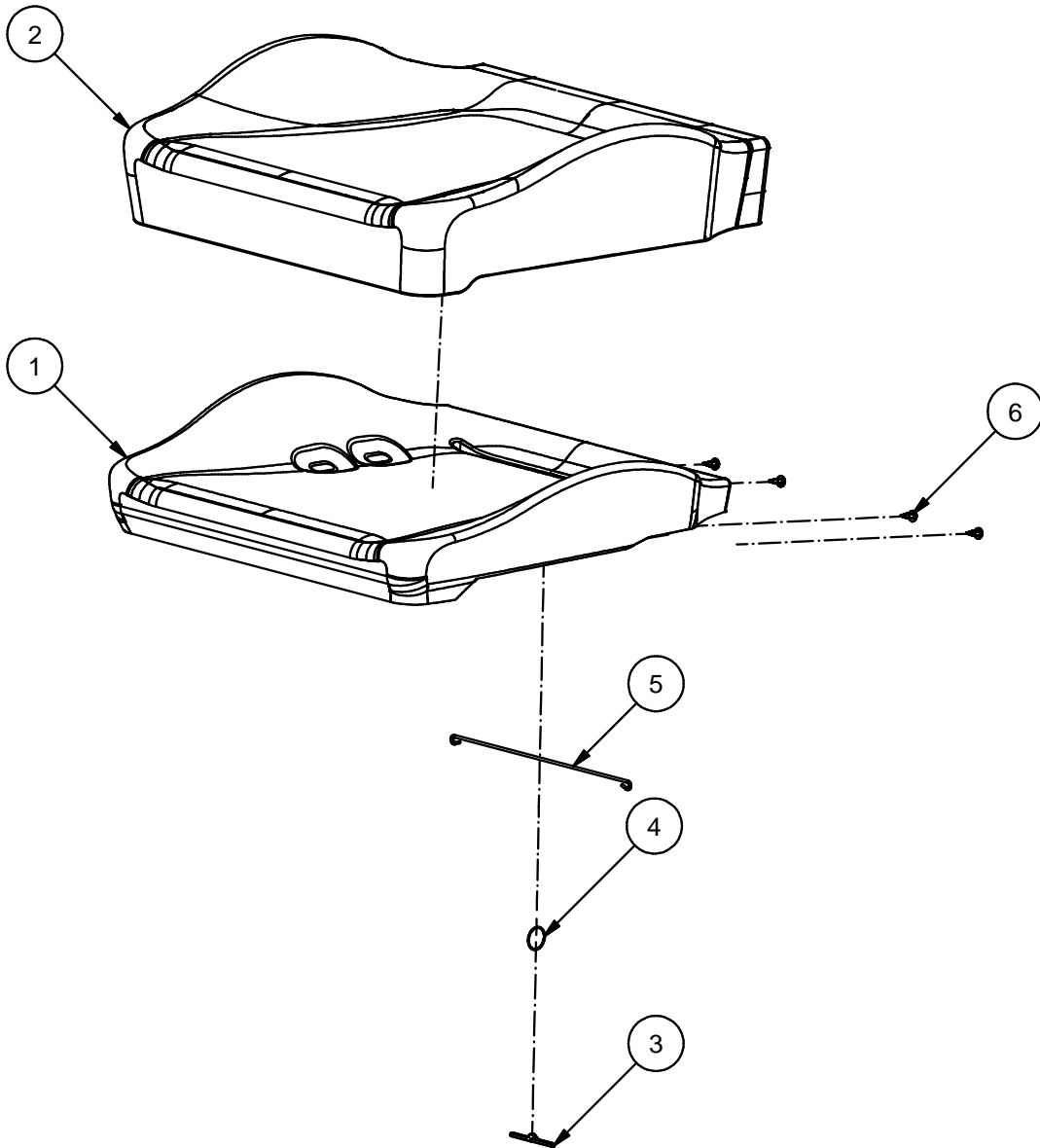


Fig.	Part. No.	Quantity	Description
1	500190	1	FOAM CUSHION
2	640315	1	TRIM CUSHION
3	621404	1	BARETT PIN
4	660057	1	LOOPS 30 MM
5	620114	1	BRACKET L=260
6	500214	4	PLASTIC RIVET



Parts Replacements List

620909

**TRIM KIT SEAT CUSHION CT PLUSH BLUE 84
9000**

Valid from 930208 to

Doc. R1-620909

Date 120511

Rev. 0

Rev.Date

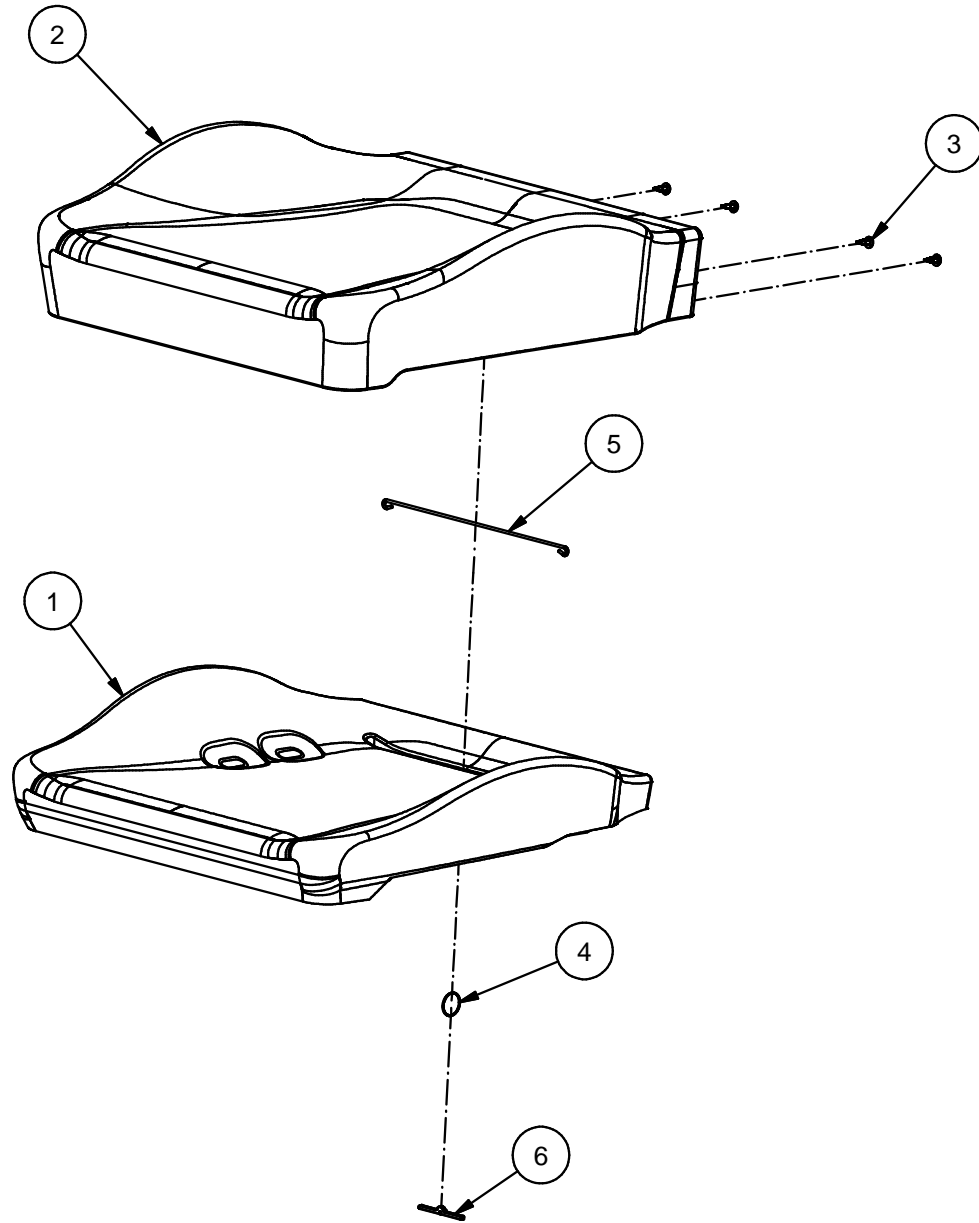


Fig.	Part. No.	Quantity	Description		
1	500189	1	FOAM CUSHION		
2	640315	1	TRIM CUSHION		PLUSH BLUE 84
3	500214	4	PLASTIC RIVET		
4	660057	1	LOOPS 30 MM		
5	620114	1	BRACKET L=260		
6	621404	1	BARETT PIN		



Parts Replacements List

620943

**TRIM KIT SEAT CUSHION PLUSH GREY 89
9000**

Valid from 930208 to

Doc. R1-620963

Date 120511

Rev. 0

Rev.Date

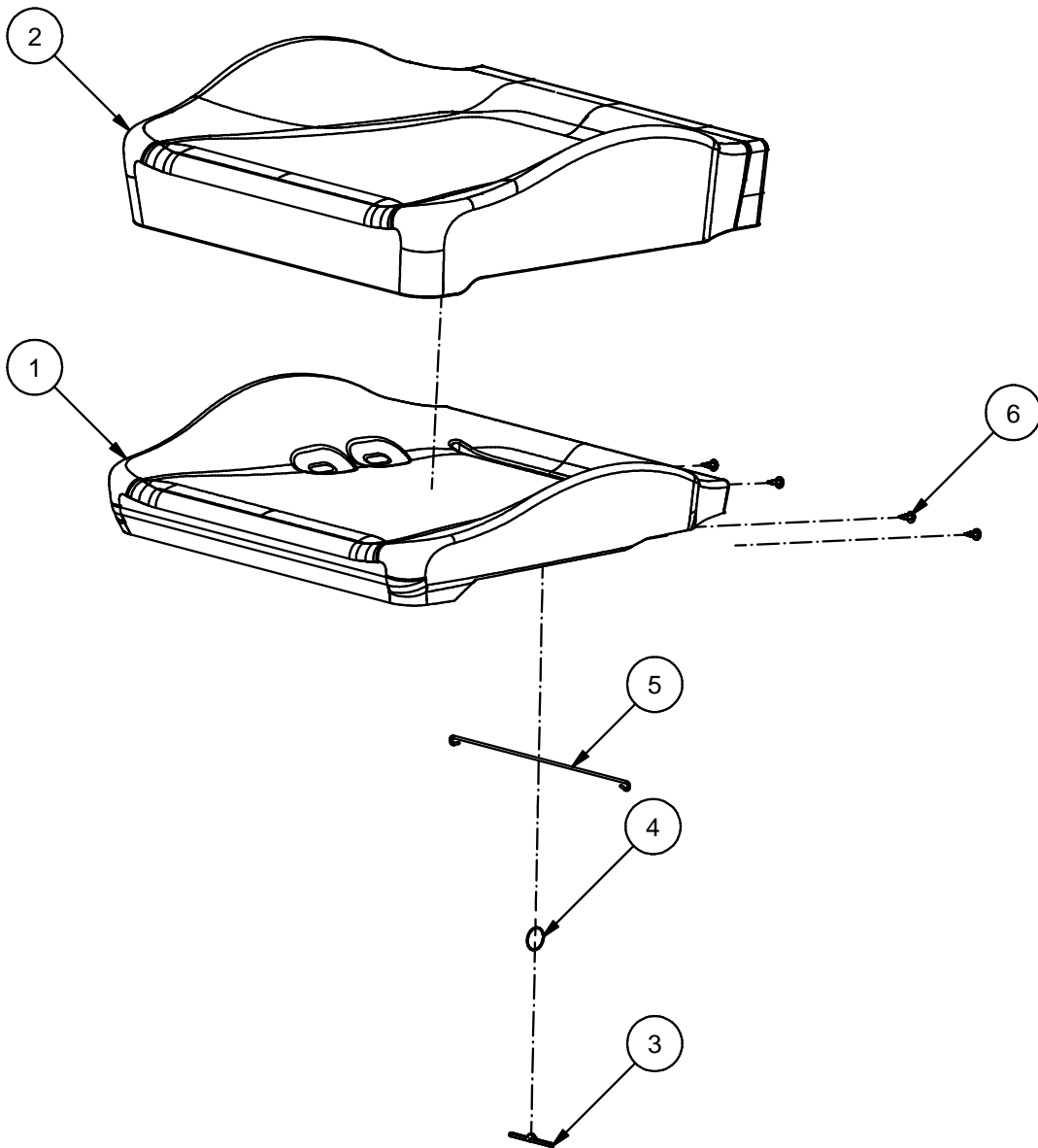


Fig.	Part. No.	Quantity	Description
1	500190	1	FOAM CUSHION
2	640335	1	TRIM CUSHION
3	621404	1	BARETT PIN
4	660057	1	LOOPS 30 MM
5	620114	1	BRACKET L=260
6	500214	4	PLASTIC RIVET



Parts Replacements List

620949

**TRIM KIT SEAT CUSHION CT PLUSH GREY 89
9000**

Valid from 930208 to

Doc. R1-620949

Date 120511

Rev. 0

Rev.Date

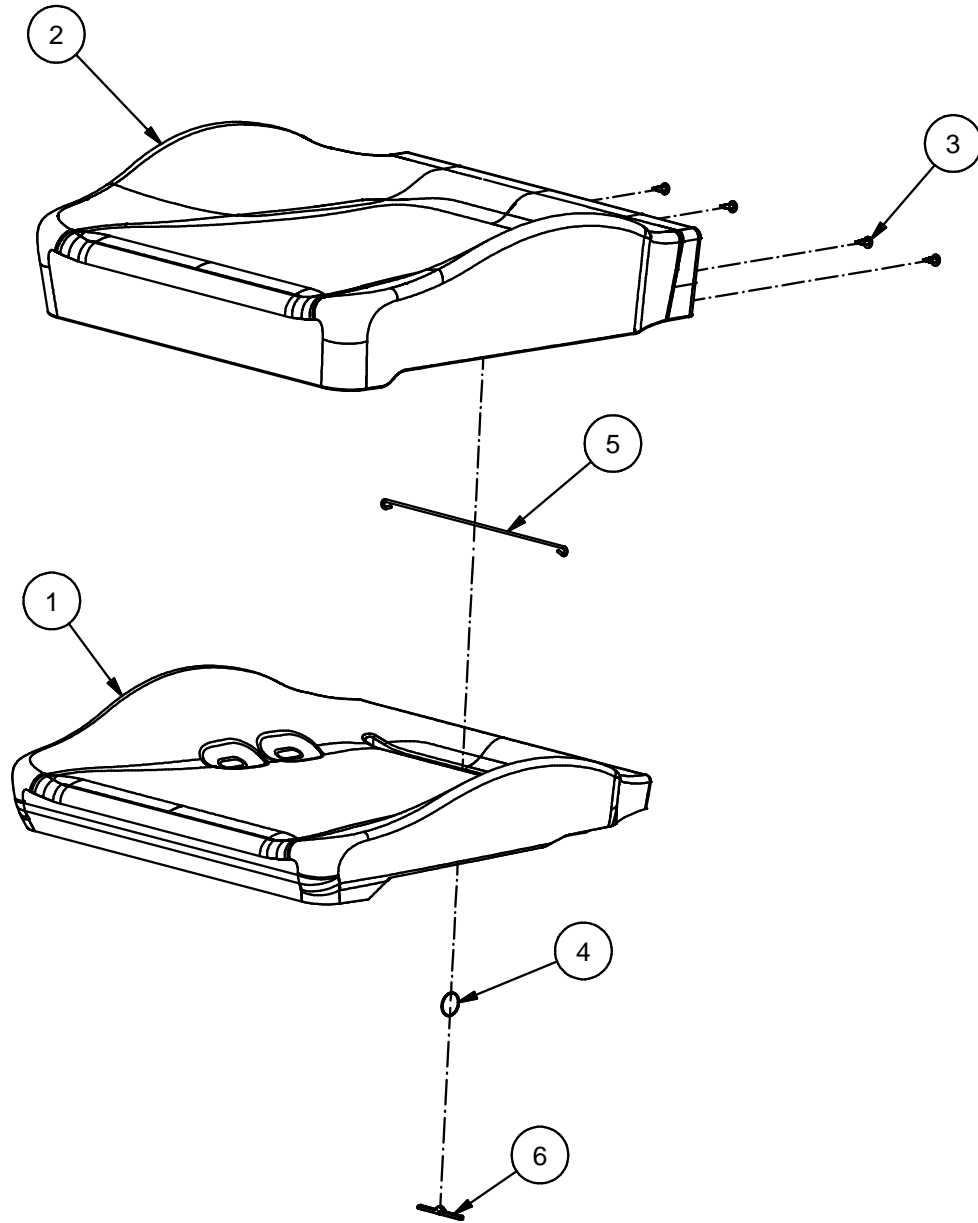


Fig.	Part. No.	Quantity	Description		
1	500189	1	FOAM CUSHION		
2	640335	1	TRIM CUSHION		PLUSH GREY 89
3	500214	4	PLASTIC RIVET		
4	660057	1	LOOPS 30 MM		
5	620114	1	BRACKET L=260		
6	621404	1	BARETT PIN		



Parts Replacements List

620963

**TRIM KIT SEAT CUSHION PLUSH BLACK 83
9000**

Valid from 930208 to

Doc. R1-620963

Date 120511

Rev. 0

Rev.Date

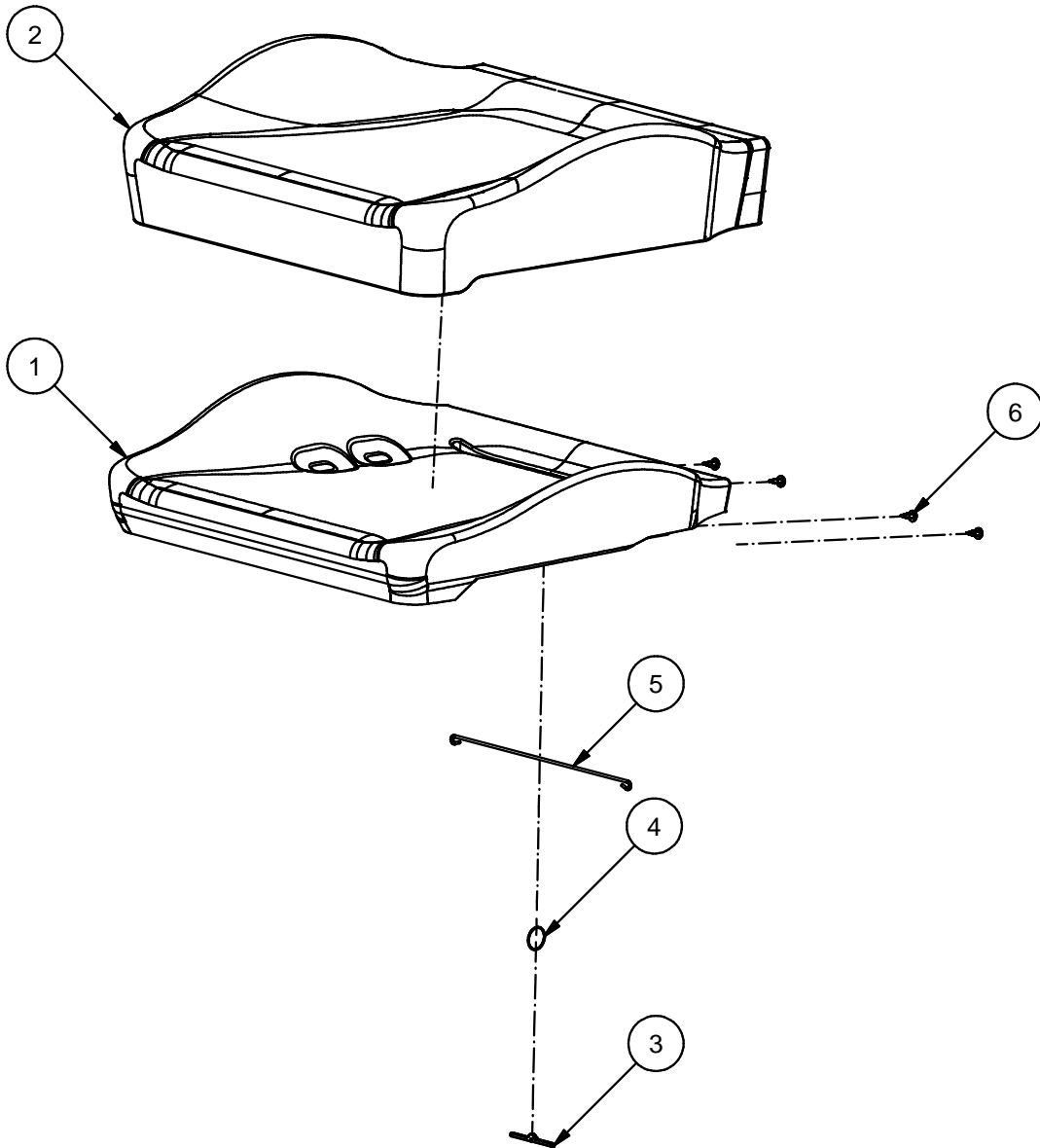


Fig.	Part. No.	Quantity	Description
1	500190	1	FOAM CUSHION
2	640295	1	TRIM CUSHION
3	621404	1	BARETT PIN
4	660057	1	LOOPS 30 MM
5	620114	1	BRACKET L=260
6	500214	4	PLASTIC RIVET



Parts Replacements List

620969

**TRIM KIT SEAT CUSHION CT PLUSH BLACK 83
9000**

Valid from 920504 to

Doc. R1-620969

Date 120511

Rev. 0

Rev.Date

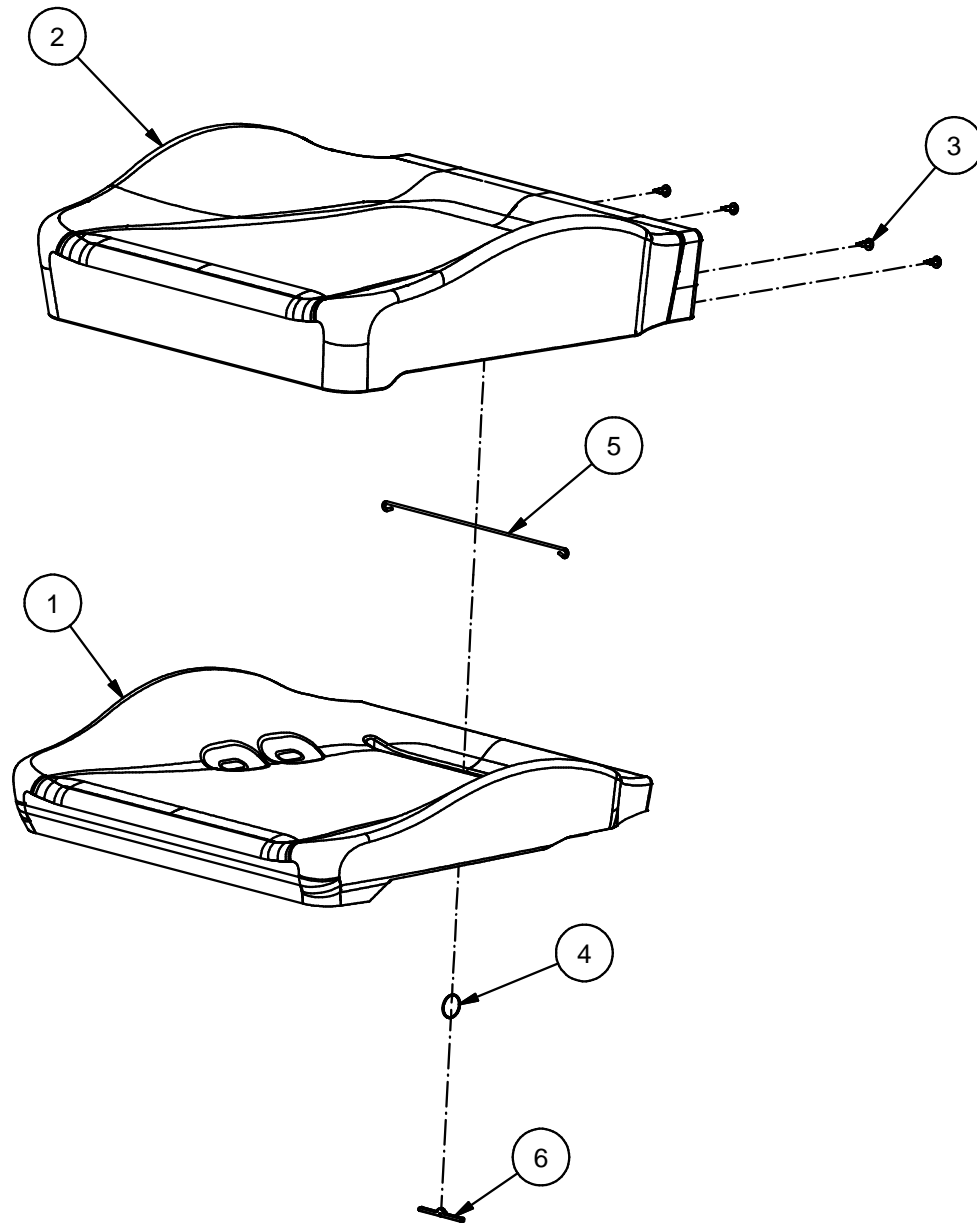


Fig.	Part. No.	Quantity	Description
1	500189	1	FOAM CUSHION
2	640295	1	TRIM CUSHION
3	500214	4	PLASTIC RIVET
4	660057	1	LOOPS 30 MM
5	620114	1	BRACKET L=260
6	621404	1	BARETT PIN



Parts Replacements List

628591

TRIM KIT BACKREST 640 NIGHTFALL

9000

Valid from 040501 to

Doc. R1-628591

Date 081124

Rev.

Rev.Date

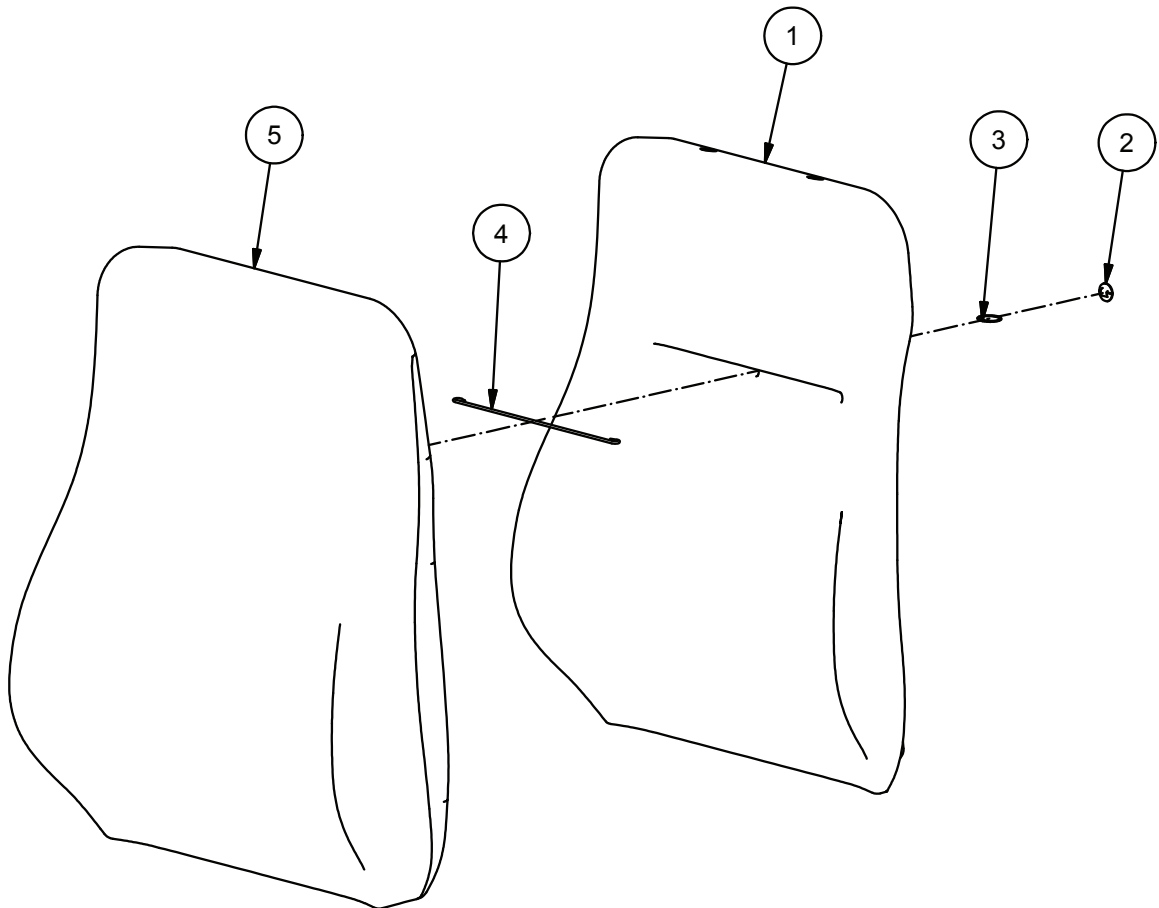


Fig.	Part. No.	Quantity	Description
1	620082	1	FOAM BACKREST 640
2	660054	1	BUTTOM SPK
3	660057	1	LOOPS 30 MM
4	620140	1	BRACKET L=230
5	641323	1	TRIM BACKREST 640

NIGHTFALL



Parts Replacements List

628604

NIGHTFALL TRIM KIT BACKREST 640 3PB EPN 9000

Valid from 061206 to

Doc. R1-628604

Date 110124

Rev. 1

Rev.Date 110303

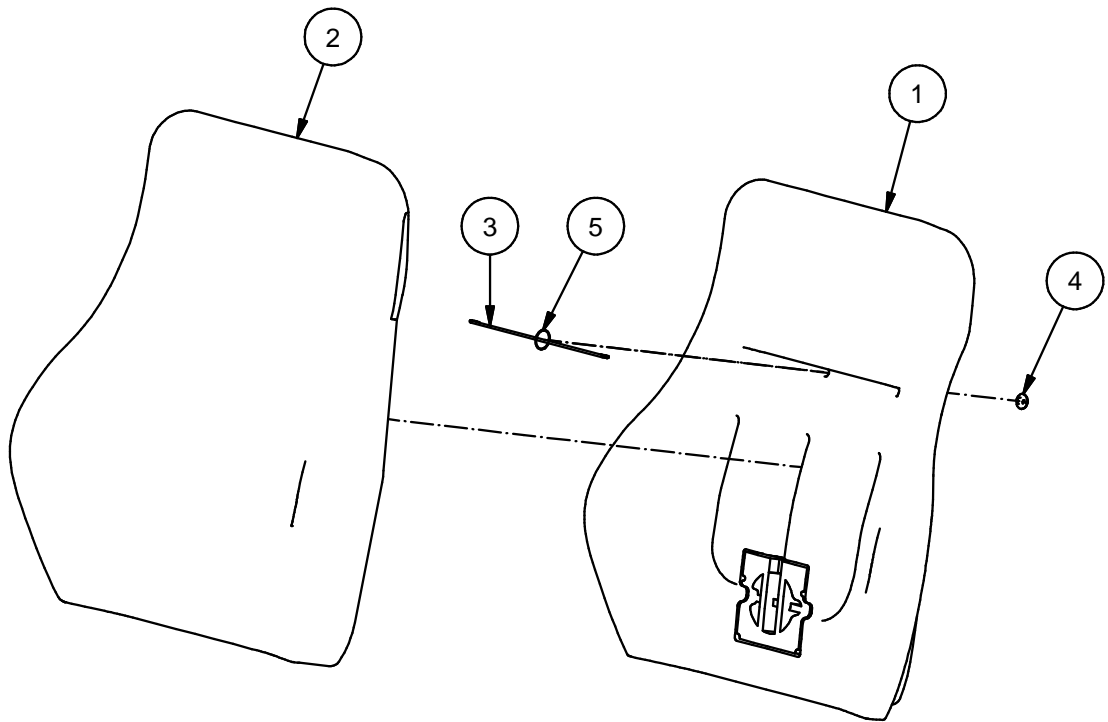


Fig.	Part. No.	Quantity	Description
1	621589	1	FOAM BACKREST 640 EPN
2	641326	1	TRIM BACKREST 640 EPN 9000
3	620140	1	BRACKET L=230
4	660054	1	BUTTOM SPK
5	660057	1	LOOPS 30 MM



Parts Replacements List

628594

**TRIM KIT BACKREST 640 3PB AIR 12V
NIGHTFALL**

Valid from 040501 to

Doc. R1-628594

Date 120530

Rev. 0

Rev.Date

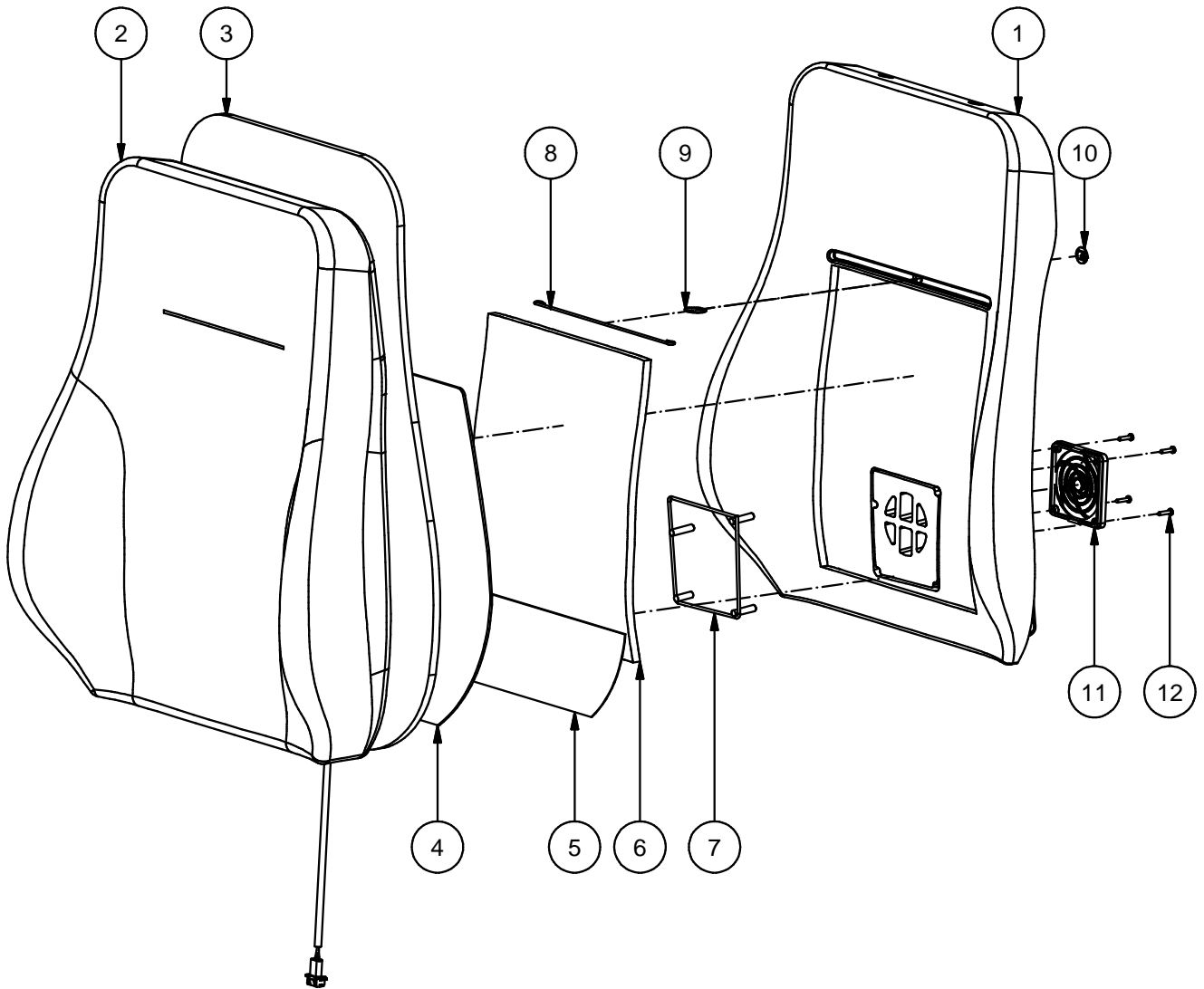


Fig.	Part. No.	Quantity	Description		
1	620456	1	FOAM BACKREST 640 3PB AIRV		
2	641327	1	TRIM BACKREST 640 AIR		NIGHTFALL
3	640017	1	POLYESTER WAD 10 MM BACK REST		
4	500350	1	HEATING ELEMENT 12V		SQUAB
5	640015	1	TRIM AIR VENT BACKREST		
6	628237	1	RUBBER HAIR MATT		
7	620447	1	FIXTURE WIRE CPL.		
8	620140	1	BRACKET L=230		
9	660057	1	LOOPS 30 MM		
10	660054	1	BUTTOM SPK		
11	621140	1	FAN NET WITH HOLES		OEM ELECTRONICS AB ART. NO.: PF80
12	650018	4	SCREW RXS	ST3.5x19	DIN7981C-Z ZN-BL



Parts Replacements List

628596

**TRIM KIT BACKREST 640 3PB AIR 24V
NIGHTFALL**

Valid from 040501 to

Doc. R1-628596

Date 120511

Rev. 0

Rev.Date

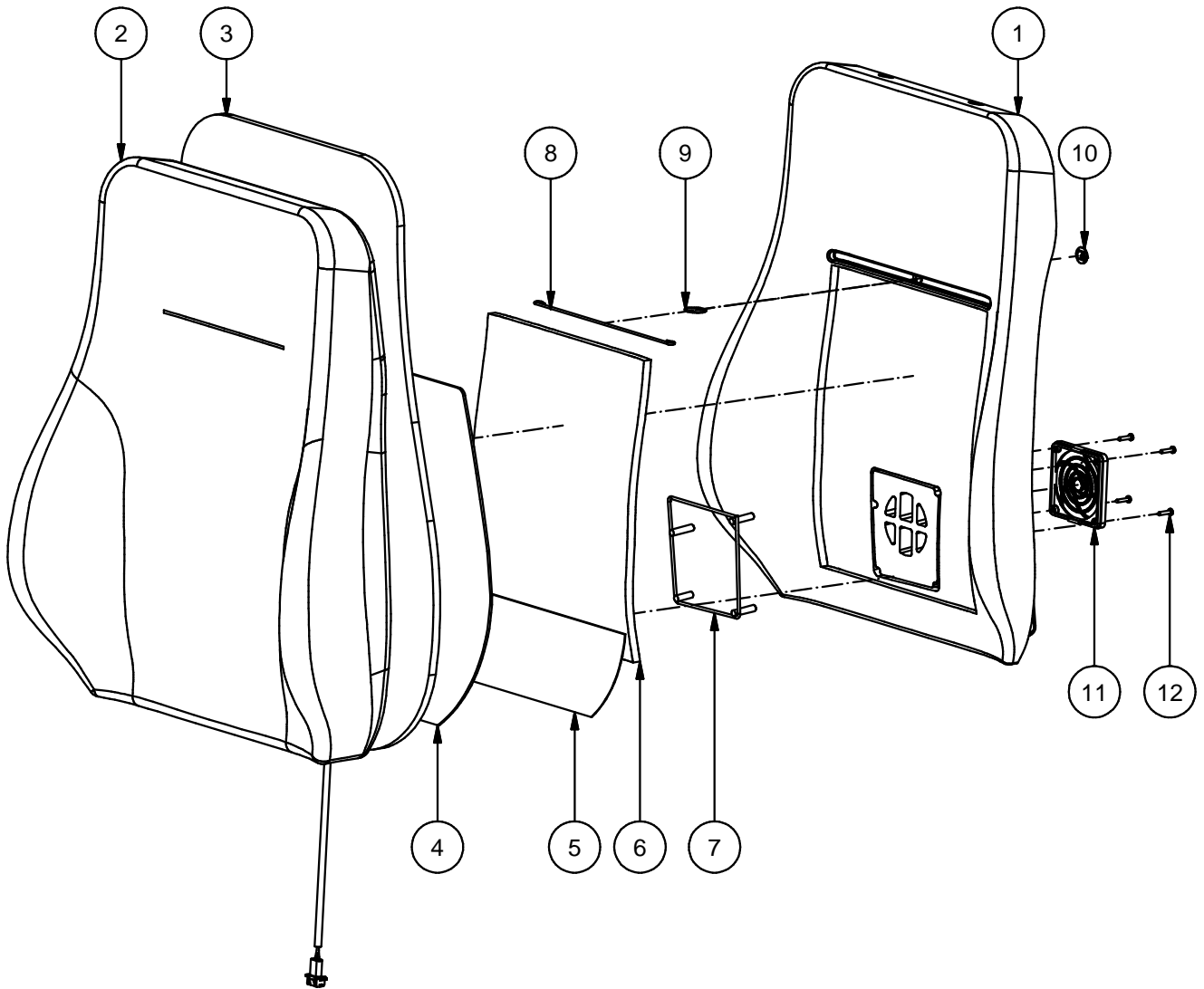


Fig.	Part. No.	Quantity	Description		
1	620456	1	FOAM BACKREST 640 3PB AIRV		
2	641327	1	TRIM BACKREST 640 AIR		NIGHTFALL
3	640017	1	POLYESTER WAD 10 MM BACK REST		
4	500358	1	HEATING ELEMENT 24V		SQUAB
5	640015	1	TRIM AIRVENT BACKREST		
6	628237	1	RUBBER HAIR MATT		
7	620447	1	FIXTURE WIRE CPL.		
8	620140	1	BRACKET L=230		
9	660057	1	LOOPS 30 MM		
10	660054	1	BUTTOM SPK		
11	621140	1	FAN NET WITH HOLES		OEM ELECTRONICS AB ART. NO.: PF80
12	650018	4	SCREW RXS	ST3.5x19	DIN7981C-Z ZN-BL



Parts Replacements List

621025

**TRIM KIT BACKREST 640 ART. LEATHER GREY
9000**

Valid from 931210 to

Doc. R1-621025

Date 120508

Rev. 0

Rev.Date

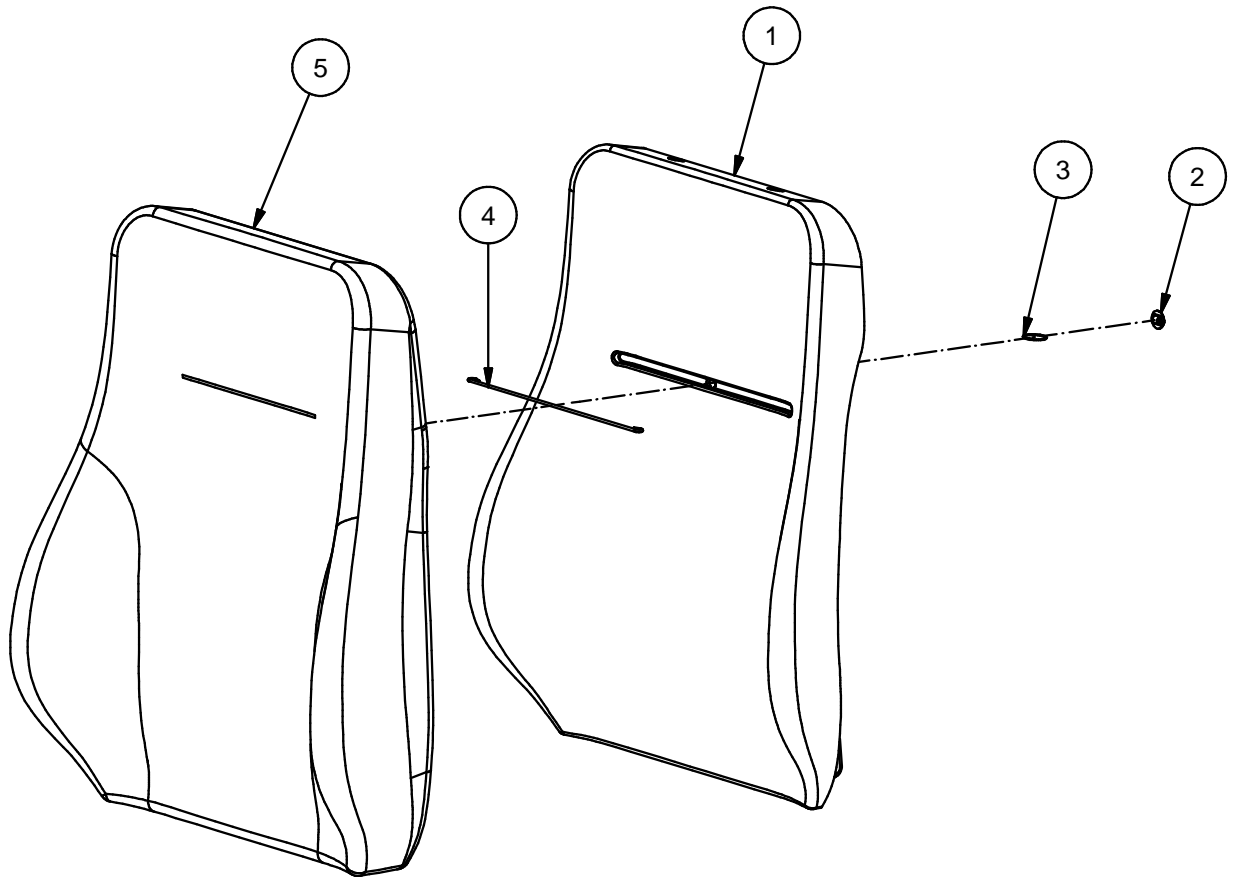


Fig.	Part. No.	Quantity	Description
1	620082	1	FOAM BACKREST 640
2	660054	1	BUTTOM SPK
3	660057	1	LOOPS 30 MM
4	620114	1	BRACKET L=260
5	500951	1	TRIM BACKREST 640
			ART. LEATHER GREY



Parts Replacements List

621031
TRIM KIT BACKREST 640 PLUSH BLUE 84
9000

Valid from 931210 to

Doc. R1-621031

Date 120508

Rev. 0

Rev.Date

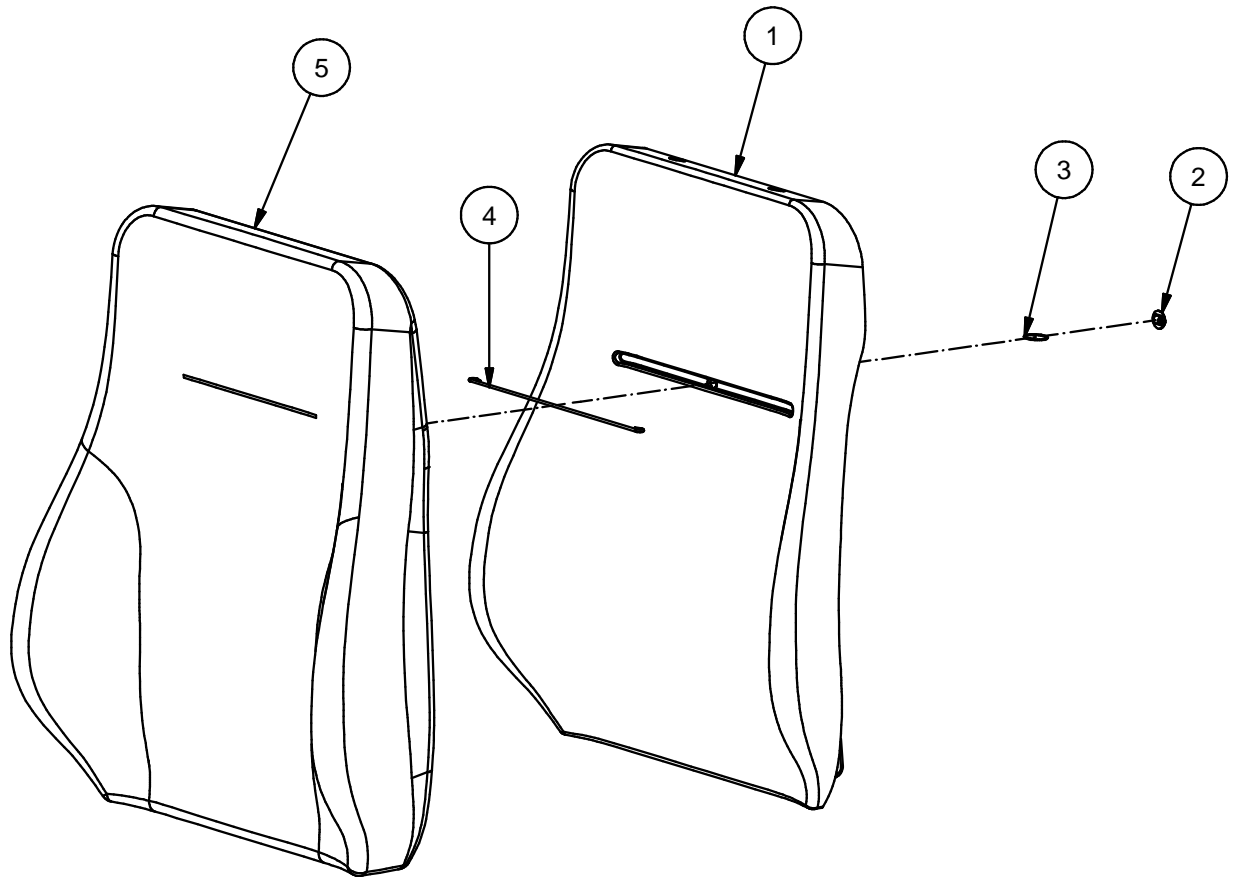


Fig.	Part. No.	Quantity	Description
1	620082	1	FOAM BACKREST 640
2	660054	1	BUTTOM SPK
3	660057	1	LOOPS 30 MM
4	620114	1	BRACKET L=260
5	640312	1	TRIM BACKREST 640
			PLUSH BLUE 84



Parts Replacements List

621033

**TRIM KIT BACKREST 640 PLUSH GREY 89
9000**

Valid from 931210 to

Doc. R1-621033

Date 120508

Rev. 0

Rev.Date

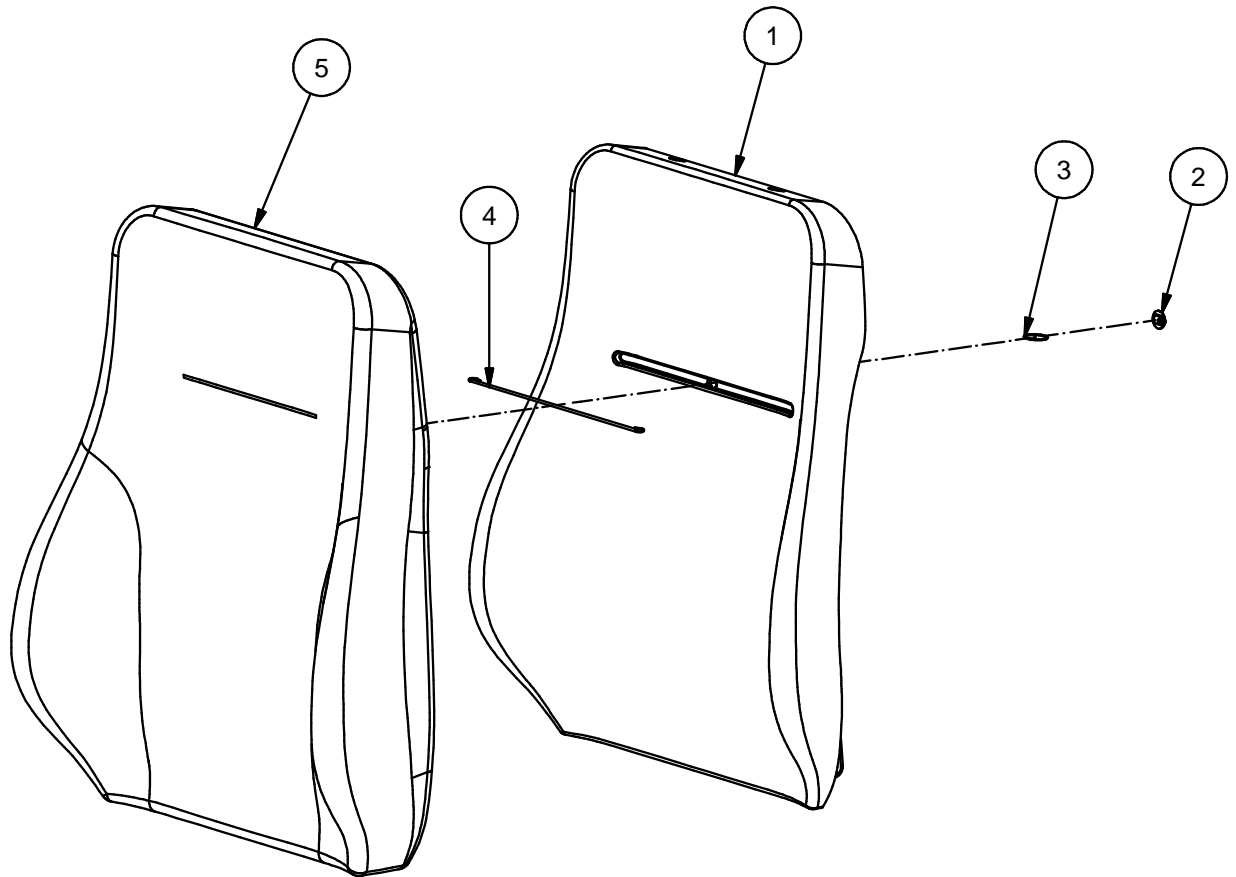


Fig.	Part. No.	Quantity	Description
1	620082	1	FOAM BACKREST 640
2	660054	1	BUTTOM SPK
3	660057	1	LOOPS 30 MM
4	620114	1	BRACKET L=260
5	640332	1	TRIM BACKREST 640
			PLUSH GREY 89



Parts Replacements List

621034

**TRIM KIT BACKREST 640 PLUSH BLACK 83
9000**

Valid from 931210 to

Doc. R1-621034

Date 120508

Rev. 0

Rev.Date

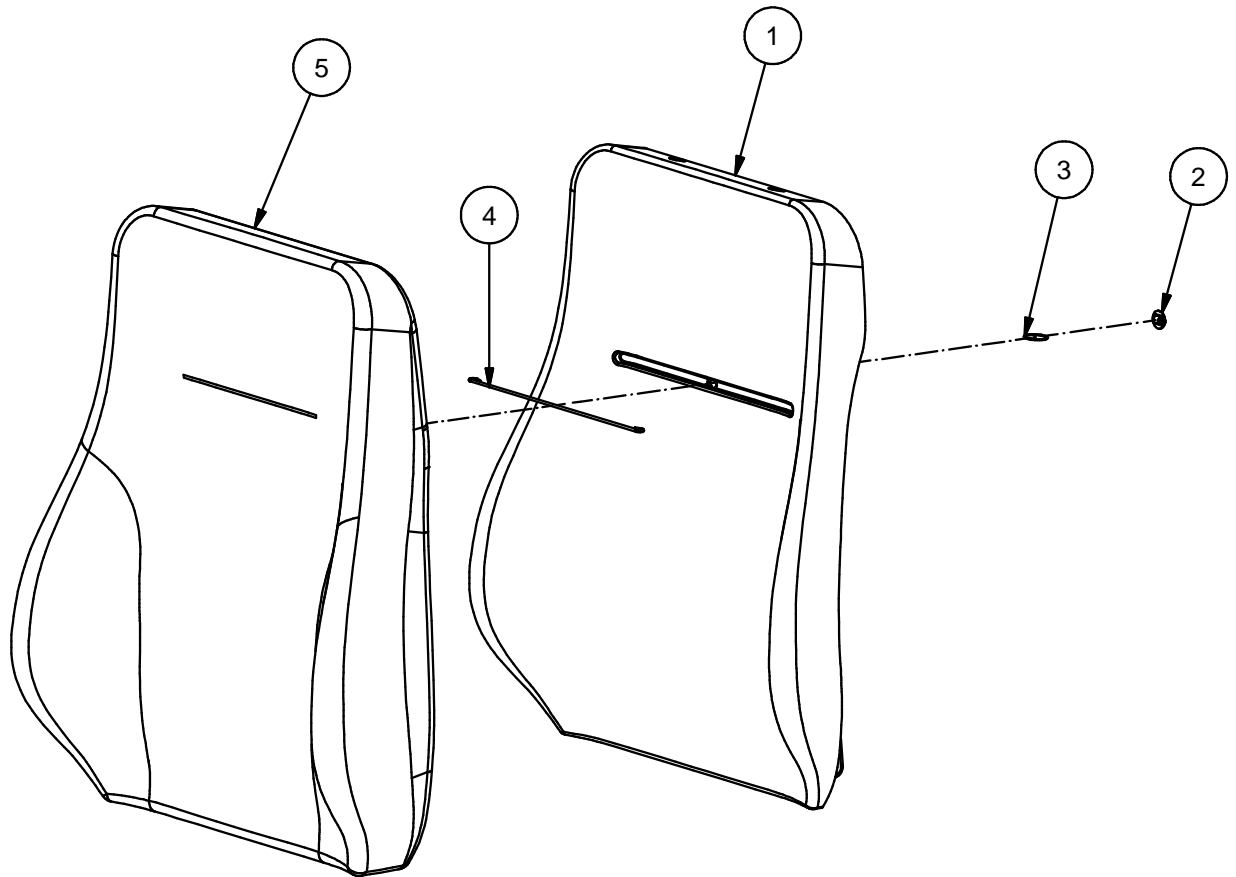


Fig.	Part. No.	Quantity	Description
1	620082	1	FOAM BACKREST 640
2	660054	1	BUTTOM SPK
3	660057	1	LOOPS 30 MM
4	620114	1	BRACKET L=260
5	640292	1	TRIM BACKREST 640
			PLUSH BLACK 83



Parts Replacements List

600602
HEAD REST NIGHTFALL
9000

Valid from 040501 to

Doc. R1-600602

Date 081124

Rev.

Rev.Date

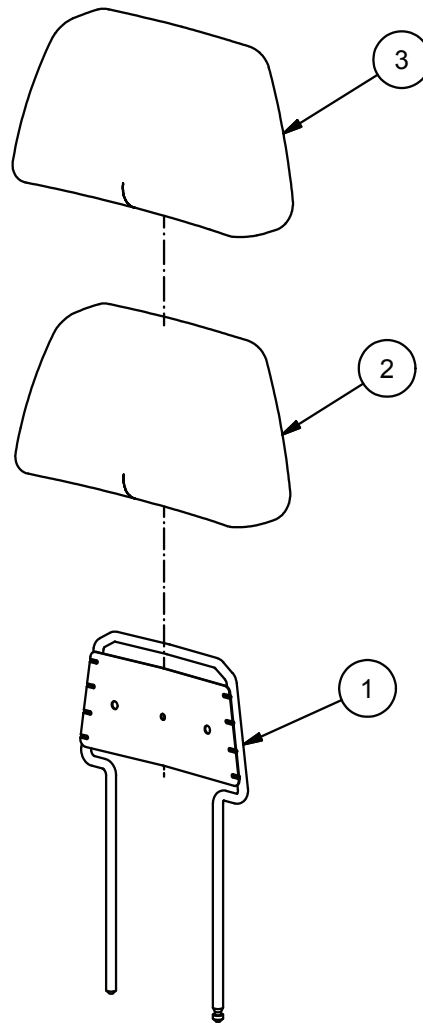


Fig.	Part. No.	Quantity	Description
1	500341	1	FRAME 9000
2	500344	1	FOAM HEAD REST
3	641322	1	TRIM HEADREST



Parts Replacements List

600505
HEADREST KIT ART. LEATEHR GREY
9000

Valid from 921126 to

Doc. R1-600505

Date 120508

Rev. 0

Rev.Date

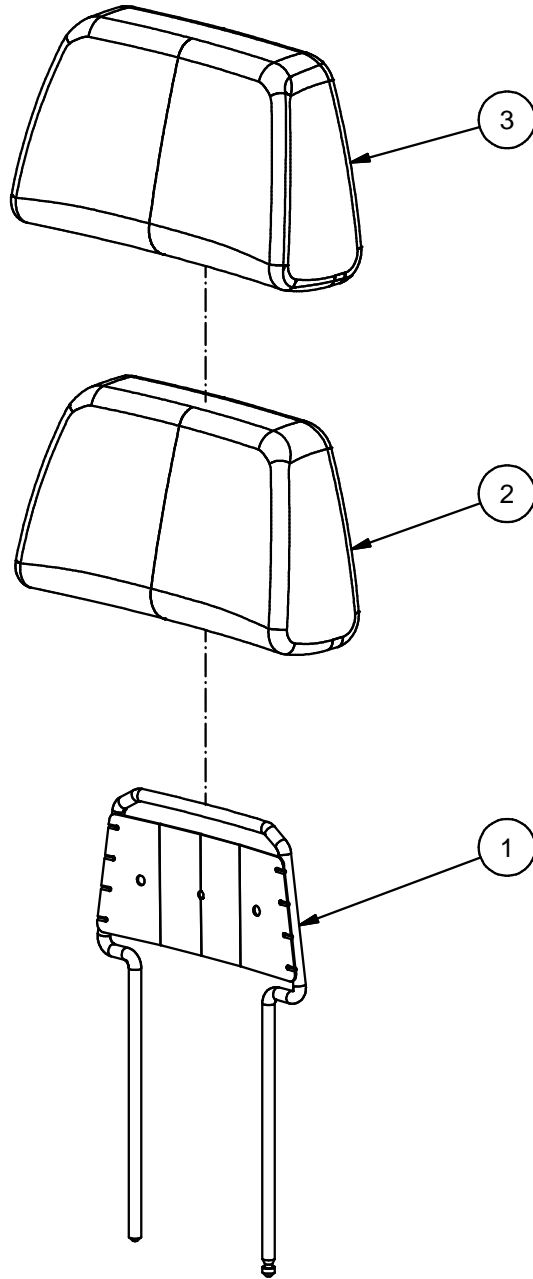


Fig.	Part. No.	Quantity	Description
1	500341	1	FRAME HEADREST
2	500344	1	FOAM HEAD REST
3	500950	1	TRIM HEADREST

ART. LEATHER GREY



Parts Replacements List

600520
HEADREST KIT PLUSH BLUE 84
9000

Valid from 921126 to

Doc. R1-600520

Date 120508

Rev. 0

Rev.Date

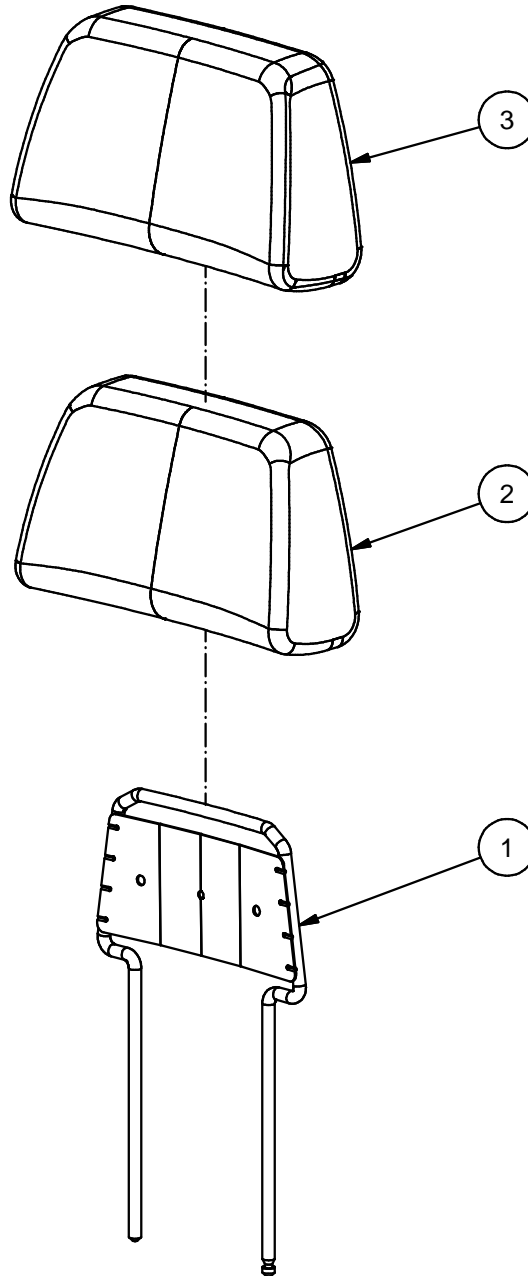


Fig.	Part. No.	Quantity	Description
1	500341	1	FRAME HEADREST
2	500344	1	FOAM HEAD REST
3	640311	1	TRIM HEADREST
			PLUSH BLUE 84



Parts Replacements List

600523
HEADREST KIT PLUSH GREY 89
9000

Valid from 921126 to

Doc. R1-600523

Date 120508

Rev. 0

Rev.Date

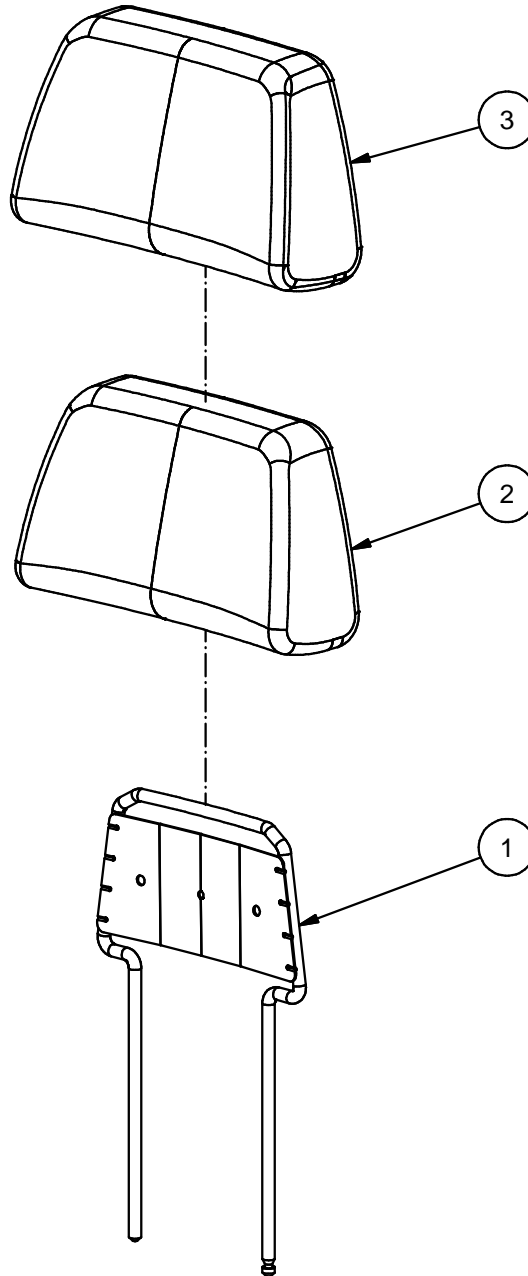


Fig.	Part. No.	Quantity	Description
1	500341	1	FRAME HEADREST
2	500344	1	FOAM HEAD REST
3	640331	1	TRIM HEADREST
			PLUSH GREY 89



Parts Replacements List

600524
HEADREST KIT PLUSH BLACK 83
9000

Valid from 921126 to

Doc. R1-600524

Date 120508

Rev. 0

Rev.Date

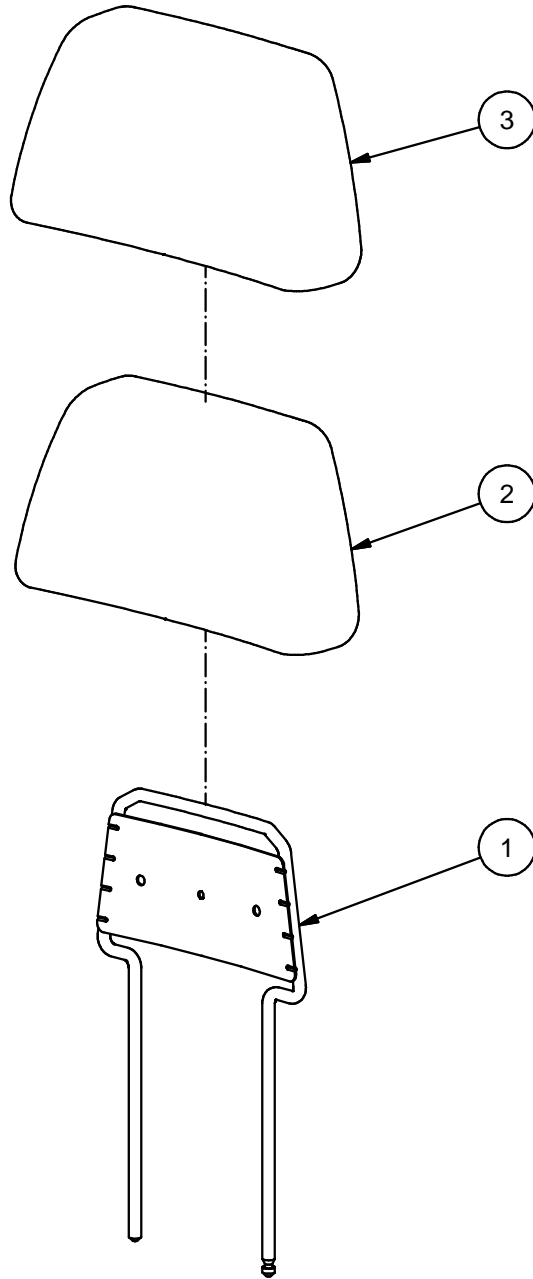


Fig.	Part. No.	Quantity	Description
1	500341	1	FRAME HEADREST
2	500344	1	FOAM HEAD REST
3	640291	1	TRIM HEADREST

PLUSH BLACK 83



Parts Replacements List

600603
HEADREST KIT NIGHTFALL 4-WAY
9000

Valid from 040506 to

Doc. R1-600603

Date 120508

Rev. 0

Rev.Date

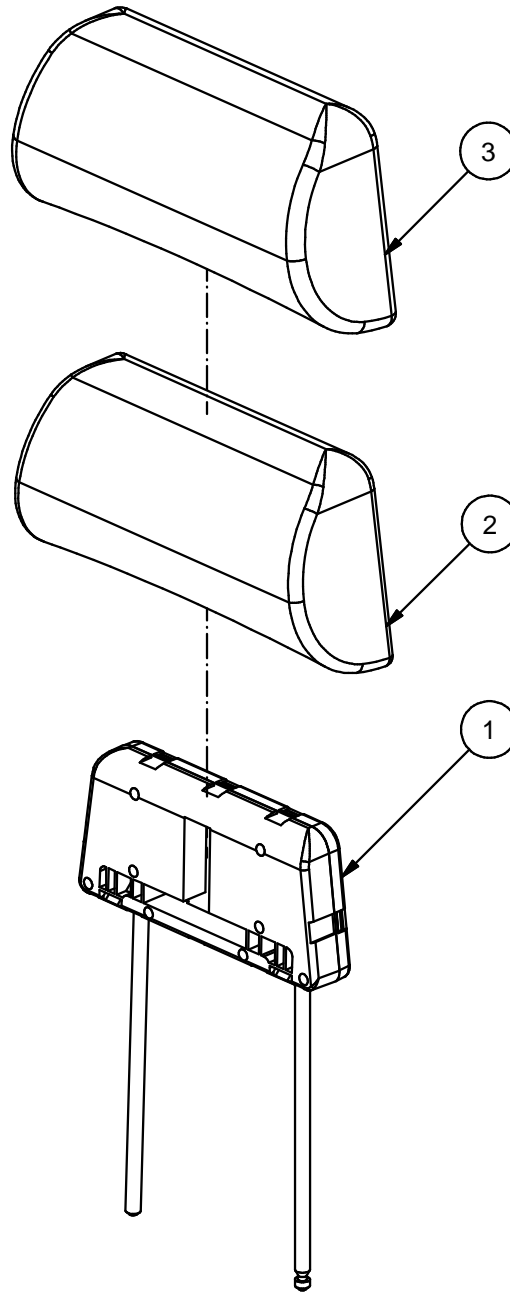


Fig.	Part. No.	Quantity	Description
2	621513	1	HEAD REST FOAM 4-WAYS
1	621567	1	HEAD REST FRAMEWORK ASM
3	641023	1	TRIM HEAD REST 4-WAYS, NIGHTFALL



Parts Replacements List

600530

**HEADREST KIT PLUSH BLACK 83 4-WAY
9000**

Valid from 010910 to

Doc. R1-600530

Date 120601

Rev. 0

Rev.Date

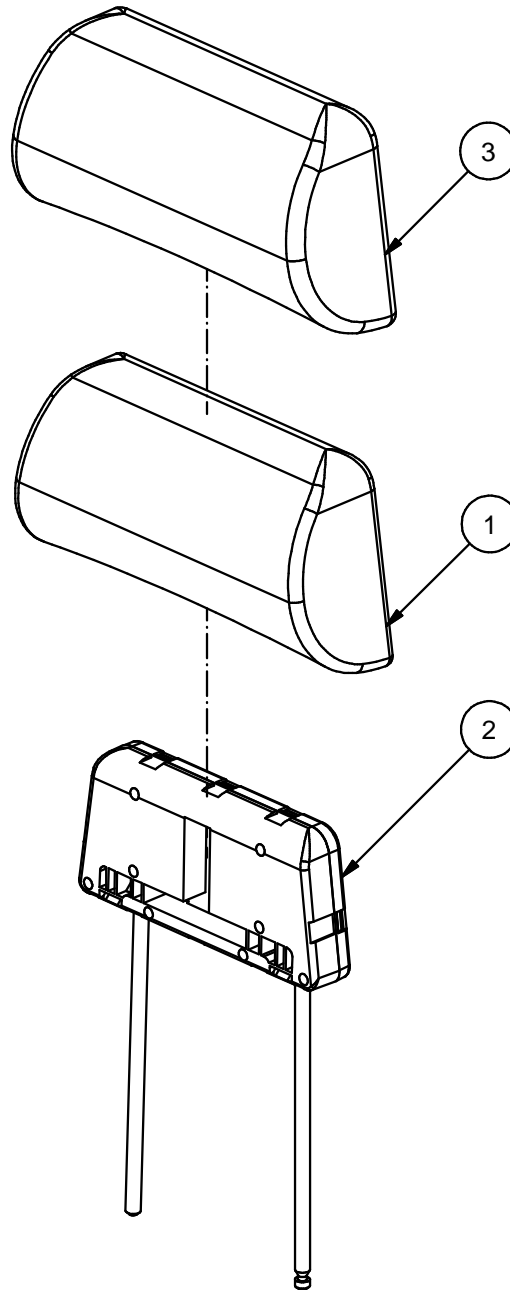


Fig.	Part. No.	Quantity	Description		
1	621513	1	HEAD REST FOAM 4-WAYS		
2	621567	1	HEAD REST FRAMEWORK ASM		
3	640290	1	TRIM HEAD REST 4-WAYS		PLUSH BLACK 83



Parts Replacements List

600241
AIRVENT TYPE 2 3PB 12V
9000

Valid from 960313 to

Doc. R1-600241

Date 120507

Rev. 0

Rev.Date

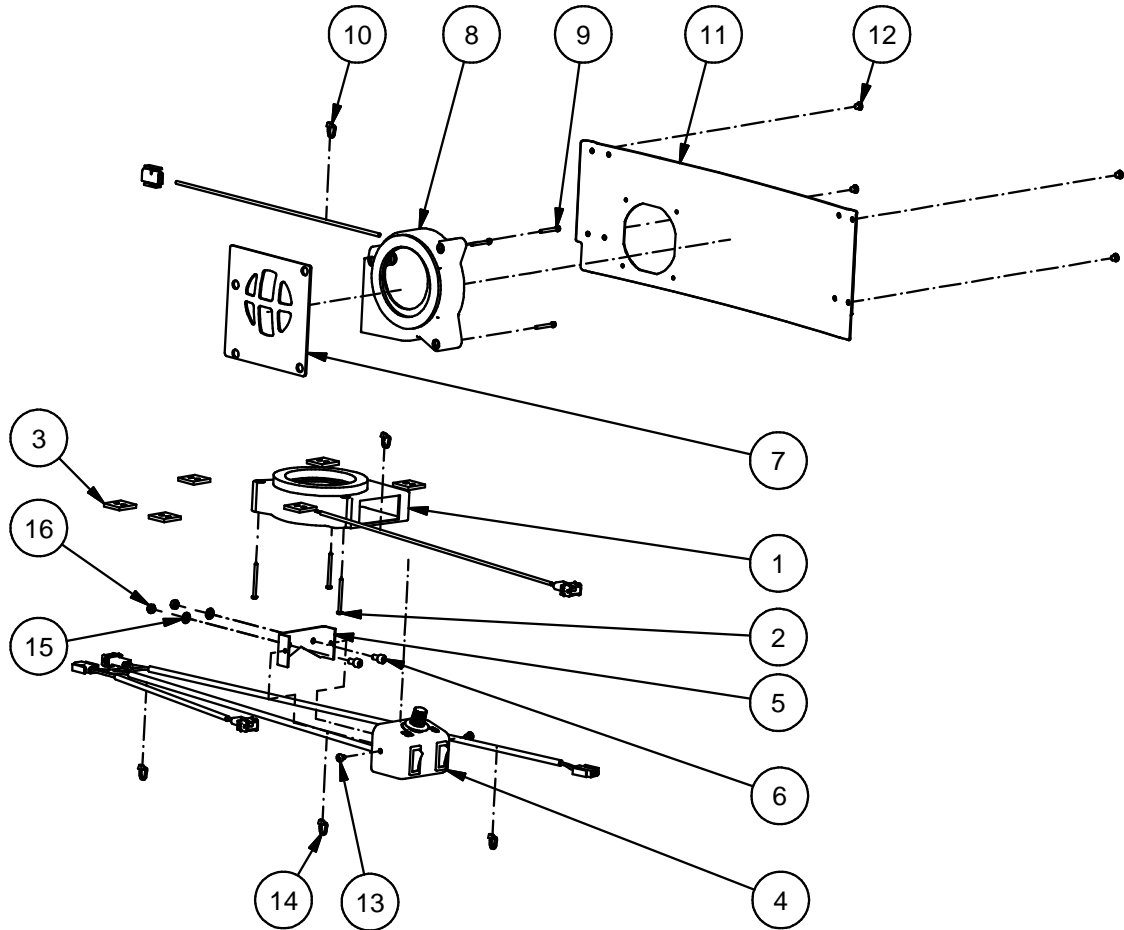


Fig.	Part. No.	Quantity	Description		
1	621121	1	FAN 12V SEAT AIRVENT TYPE 2		
2	650063	3	SCREW RXS	ST2.9x38	DIN7981C ZN POZ
3	501120	6	FOAM RUBBER		
4	628032	1	CONTROL AIRVENT TYPE 2		
5	620441	1	BRACKET		
6	650062	2	SCREW MC6S	M5x10	ISO4762 ZN 8.8
7	620450	1	FAN PROTECTING PLATE		
8	621122	1	FAN 12V BACKREST AIRVENT TYPE 2		
9	650061	3	SCREW ECS	M3x25	DIN84 ZN 4.8
10	660109	1	CABLE TIE		
11	620459	1	PLATE BACKREST 640 3P		
12	653000	4	RIVET AL/ST	4.0x7	AP/D BS
13	650037	2	SCREW MRX-TT	M4x6	DIN7500C-Z ZN BLACK
14	500317	4	CABLE TIE	200x4.6	WHITE
15	500495	2	WASHER IZ	6.4x11x0.7	DIN6798 ZN
16	500496	2	NUT M6M	M5	DIN934 ZN K8



Parts Replacements List

600243
AIRVENT TYPE 2 3PB 24V
9000

Valid from 960313 to

Doc. R1-600243

Date 120530

Rev. 0

Rev.Date

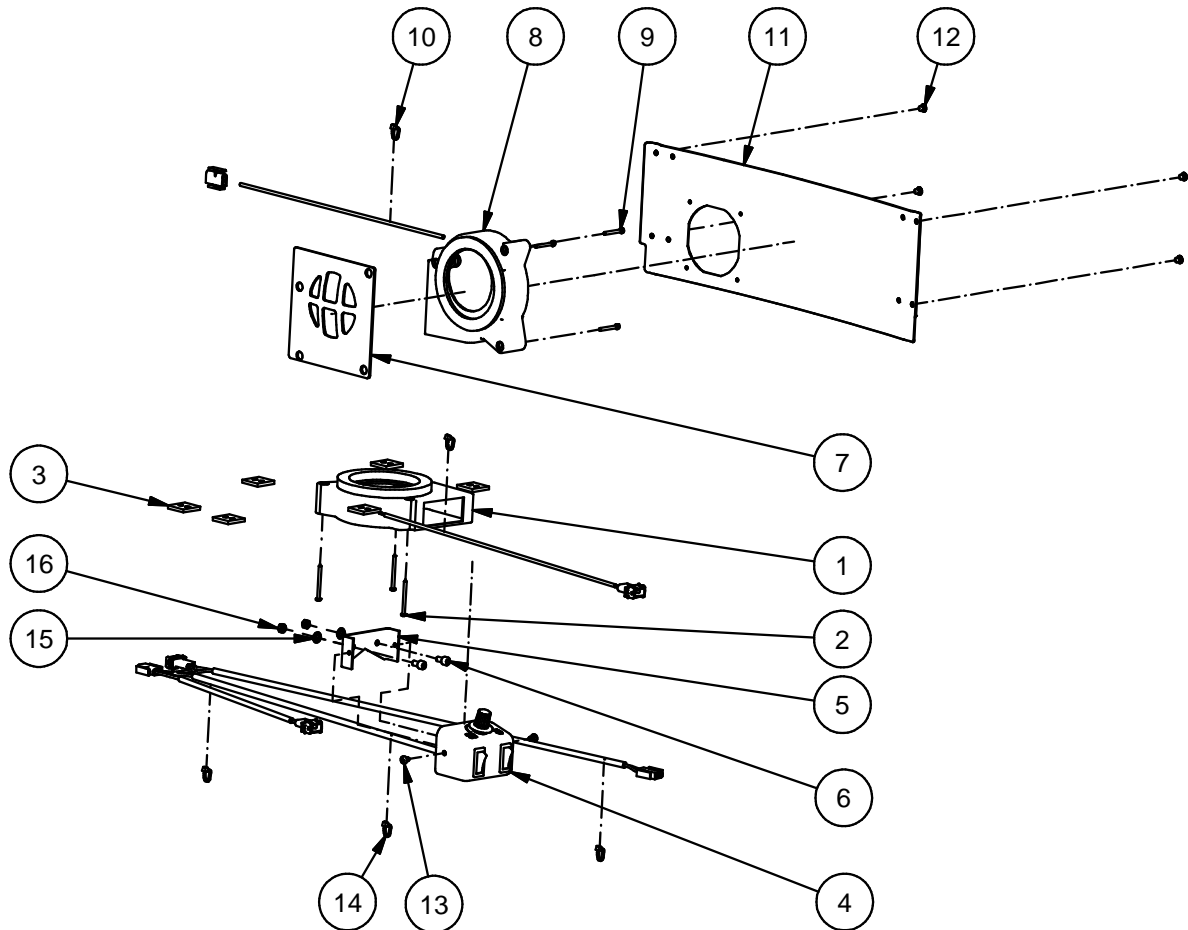


Fig.	Part. No.	Quantity	Description		
1	621123	1	FAN 24V SEAT AIRVENT TYPE 2		
2	650063	3	SCREW RXS	ST2.9x38	DIN7981C ZN POZ
3	501120	6	FOAM RUBBER		
4	628032	1	CONTROL AIRVENT TYPE 2		
5	620441	1	BRACKET		
6	650062	2	SCREW MC6S	M5x10	ISO4762 ZN 8.8
7	620450	1	FAN PROTECTING PLATE		
8	621124	1	FAN 24V BACKREST AIRVENT TYPE 2		
9	650061	3	SCREW ECS	M3x25	DIN84 ZN 4.8
10	660109	1	CABLE TIE		
11	620459	1	PLATE BACKREST 640 3P		
12	653000	4	RIVET AL/ST	4.0x7	AP/D BS
13	650037	2	SCREW MRX-TT	M4x6	DIN7500C-Z ZN BLACK
14	500317	4	CABLE TIE	200x4.6	WHITE
15	500495	2	WASHER IZ	6.4x11x0.7	DIN6798 ZN
16	500496	2	NUT M6M	M5	DIN934 ZN K8



Parts Replacements List

501090
HEATING ELEMENT 12V
9000

Valid from 021031 to

Doc. R1-501090

Date 120208

Rev. 0

Rev.Date

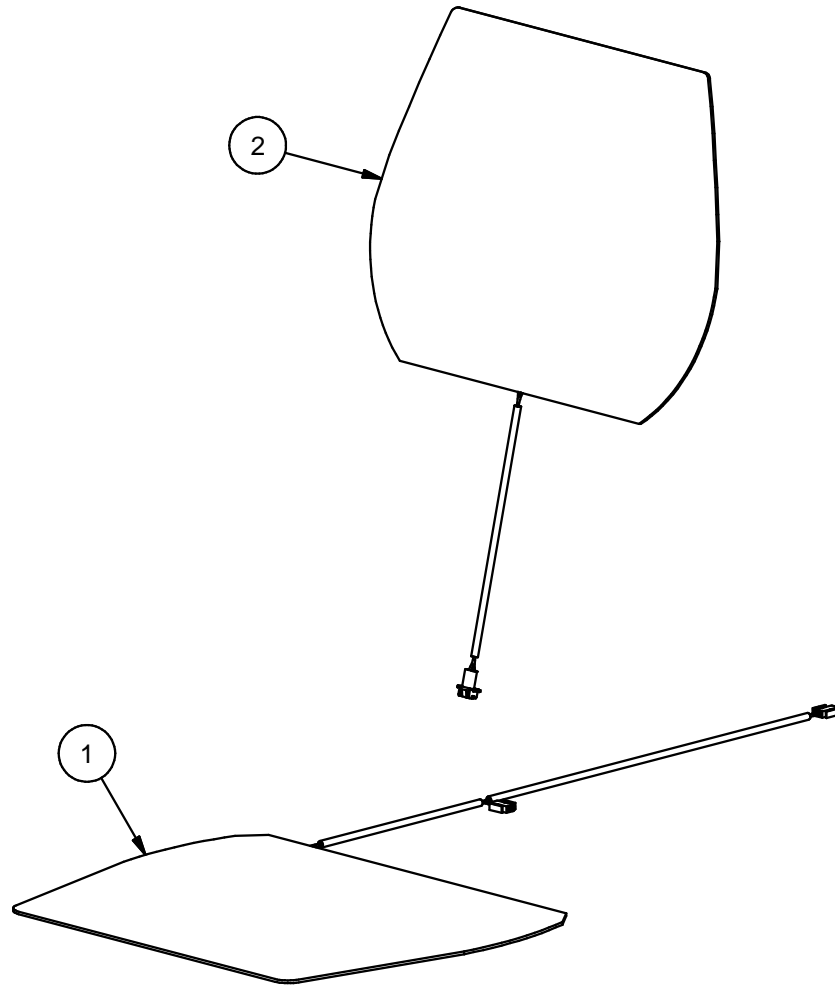


Fig.	Part. No.	Quantity	Description
1	500349	1	HEATING ELEMENT 12V CUSHION
2	500350	1	HEATING ELEMENT 12V SQUAB



Parts Replacements List

501091
HEATING ELEMENT 24V
9000

Valid from 880502 to

Doc. R1-501091

Date 100914

Rev. 0

Rev.Date

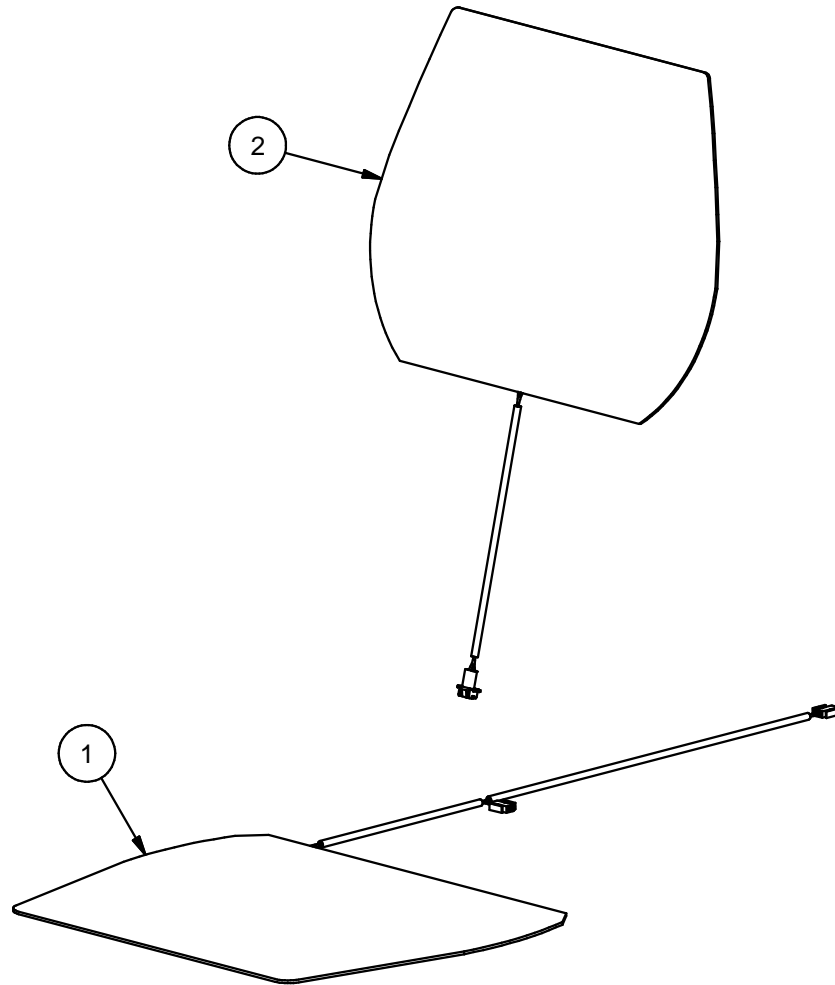


Fig.	Part. No.	Quantity	Description	
1	500357	1	HEATING ELEMENT 24V	CUSHION
2	500358	1	HEATING ELEMENT 24V	SQUAB



Parts Replacements List

603124
MICRO SWITCH IP40
9000

Valid from 070611 to

Doc. R1-603124

Date 120507

Rev. 0

Rev.Date

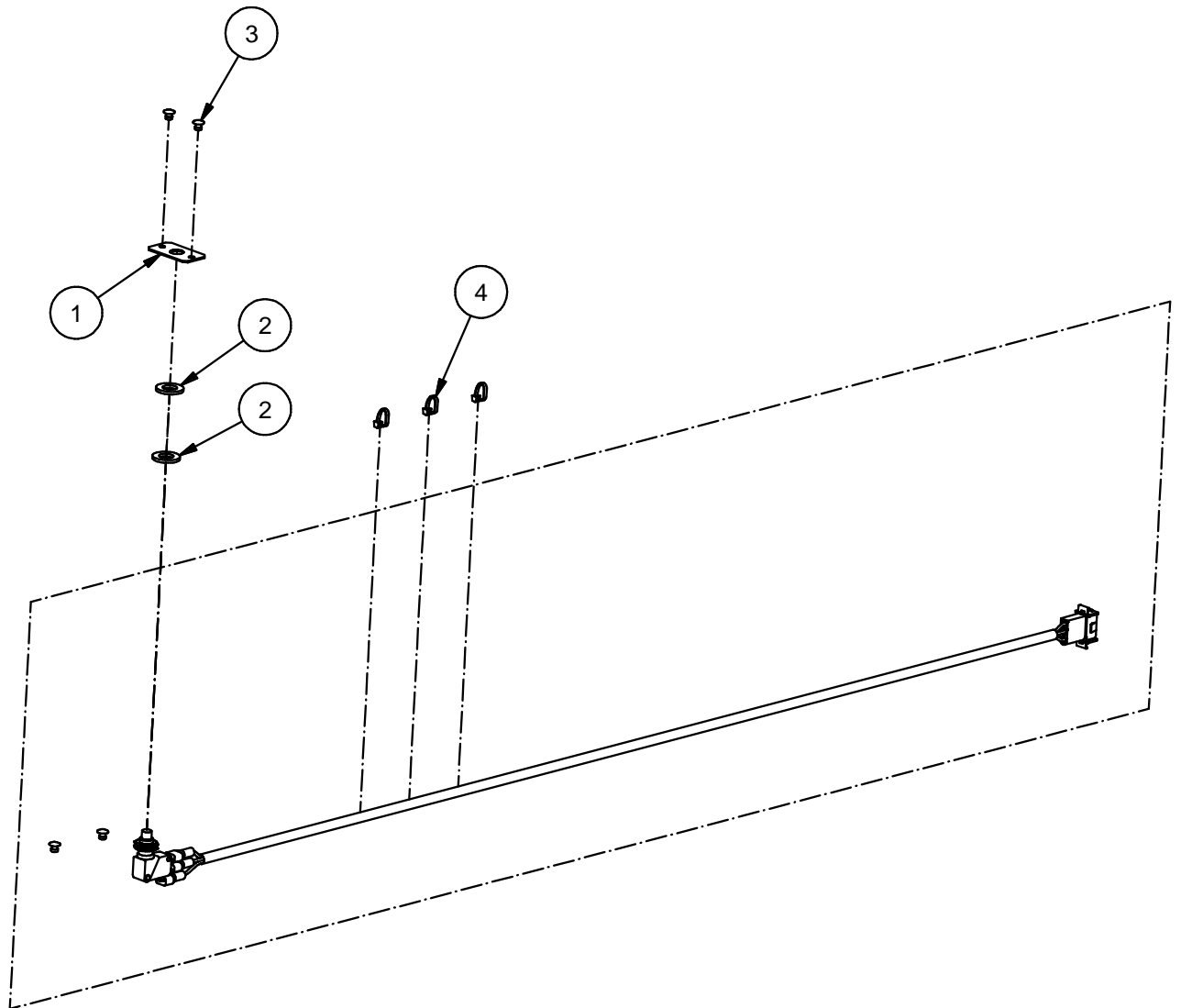


Fig.	Part. No.	Quantity	Description		
1	628684	1	BRACKET MICROSWITCH		
2	561027	2	WASHER	10.5x20x2	
3	653000	4	RIVET AL/ST	4.0x7	AP/D BS
4	500317	3	CABLE TIE	200x4.6	WHITE
5	629342	1	MICROSWITCH IP40		



Parts Replacements List

603125

**MICRO SWITCH IP40 + BUZZER 12V
9000**

Valid from 070611 to

Doc. R1-603125

Date 120507

Rev. 0

Rev.Date

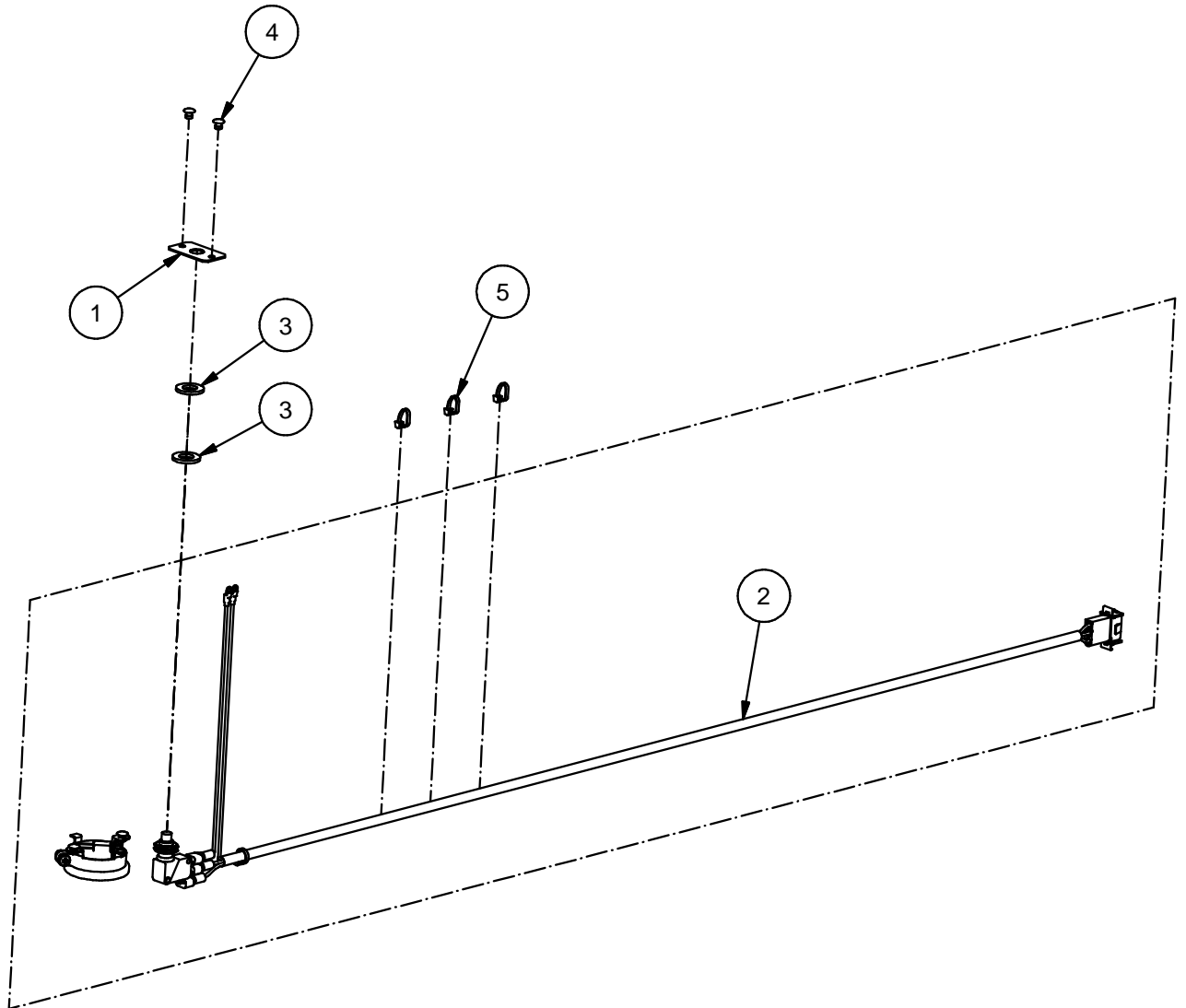


Fig.	Part. No.	Quantity	Description		
1	628684	1	BRACKET MICROSWITCH		
2	629348	1	MICRO SWITCH IP40 + BUZZER 12V		
3	561027	2	WASHER	10.5x20x2	
4	653000	4	RIVET AL/ST	4.0x7	AP/D BS
5	500317	3	CABLE TIE	200x4.6	WHITE



Parts Replacements List

603126
MICRO SWITCH IP40+BUZZER 24V
9000

Valid from 070611 to

Doc. R1-603126

Date 110428

Rev. 0

Rev.Date

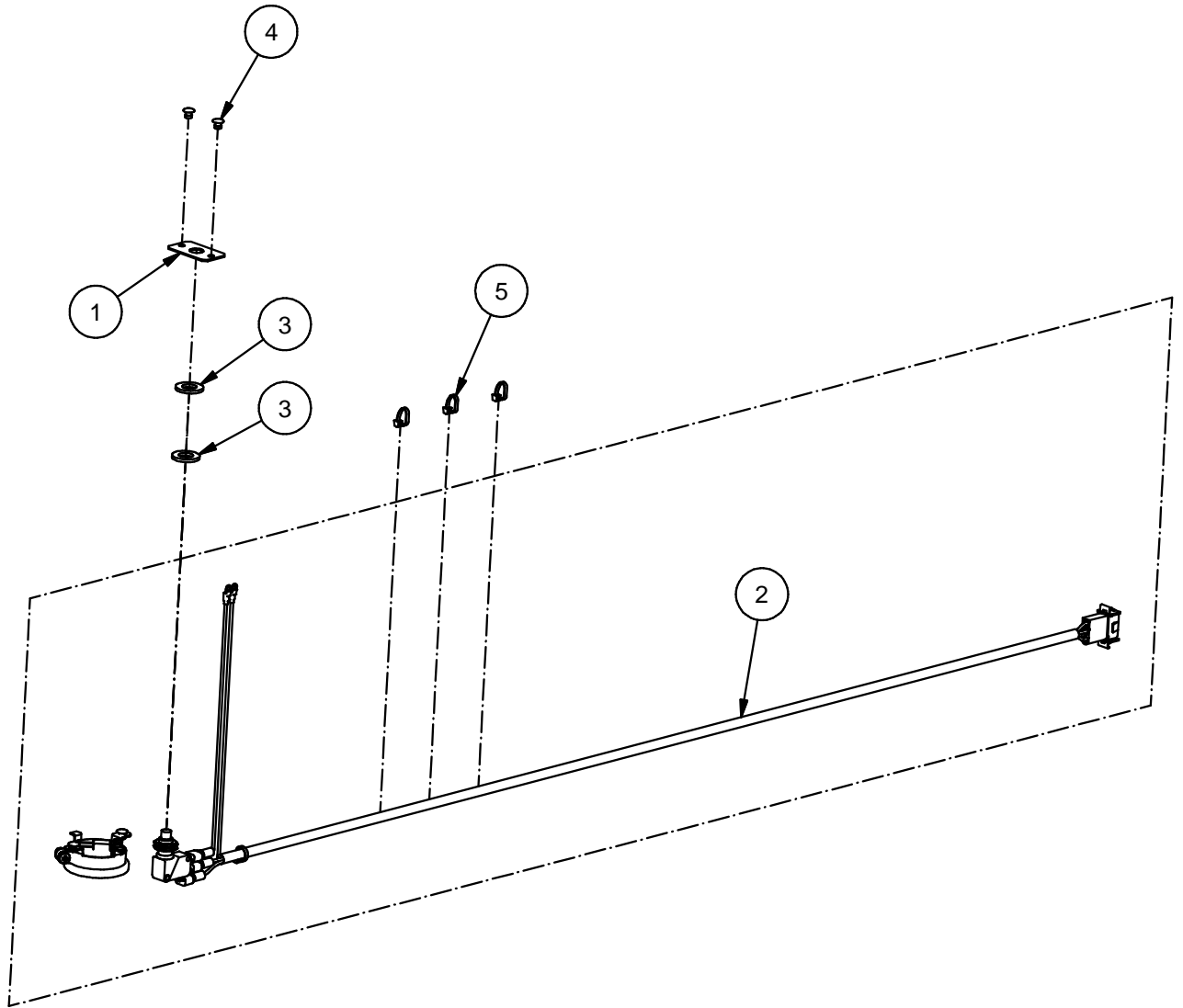


Fig.	Part. No.	Quantity	Description		
1	628684	1	BRACKET MICROSWITCH		
2	629349	1	MICRO SWITCH IP40		
3	561027	2	WASHER	10.5x20x2	
4	653000	4	RIVET AL/ST	4.0x7	AP/D BS
5	500317	3	CABLE TIE	200x4.6	WHITE



Parts Replacements List

603127
MICRO SWITCH IP57
9000

Valid from 070611 to

Doc. R1-603127

Date 120504

Rev. 0

Rev.Date

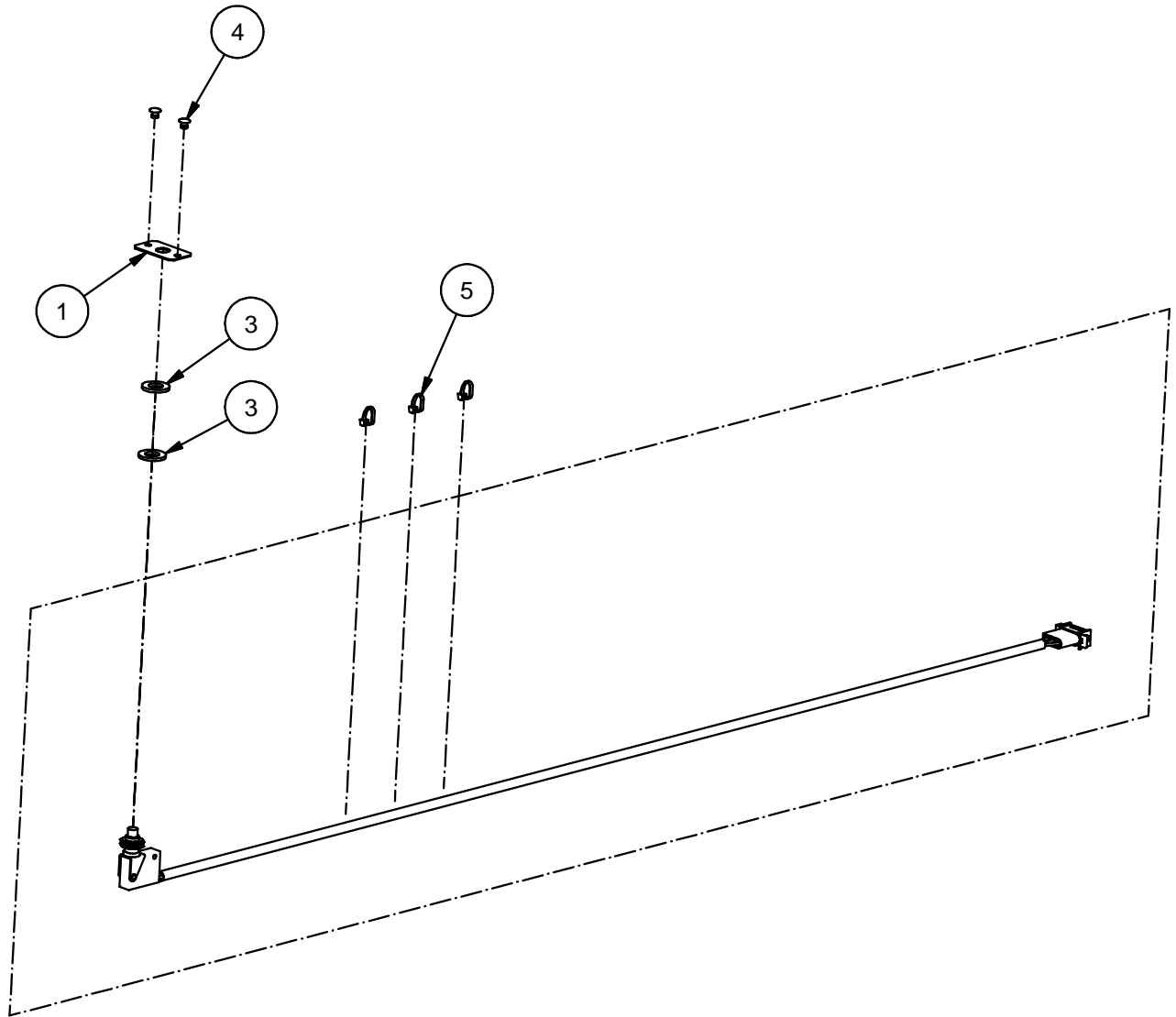


Fig.	Part. No.	Quantity	Description		
1	628684	1	BRACKET MICROSWITCH		
3	561027	2	WASHER	10.5x20x2	
4	653000	2	RIVET AL/ST	4.0x7	AP/D BS
5	500317	3	CABLE TIE	200x4.6	WHITE
7	629346	1	MICROSWITCH IP57		



Parts Replacements List

603128
MICRO SWITCH IP57+BUZZER 12V
9000

Valid from 070611 to

Doc. R1-603128

Date 120504

Rev. 0

Rev.Date

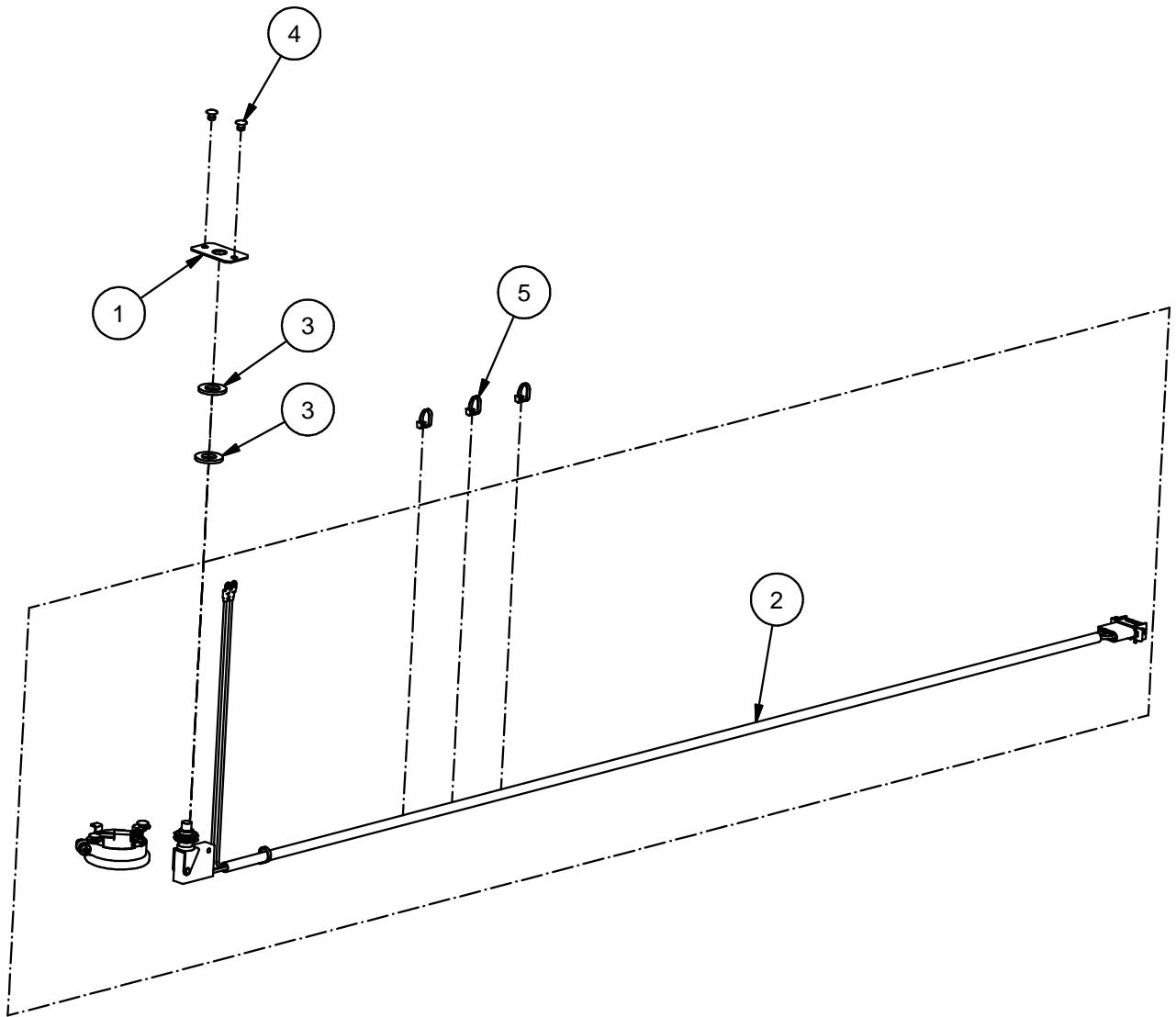


Fig.	Part. No.	Quantity	Description		
1	628684	1	BRACKET MICROSWITCH		
2	629350	1	MICRO SWITCH IP57 + BUZZER 12V		
3	561027	2	WASHER	10.5x20x2	
4	653000	4	RIVET AL/ST	4.0x7	AP/D BS
5	500317	3	CABLE TIE	200x4.6	WHITE



Parts Replacements List

603129

**MICRO SWITCH IP57+BUZZER 24V
9000**

Valid from 070611 to

Doc. R1-603129

Date 120504

Rev. 0

Rev.Date

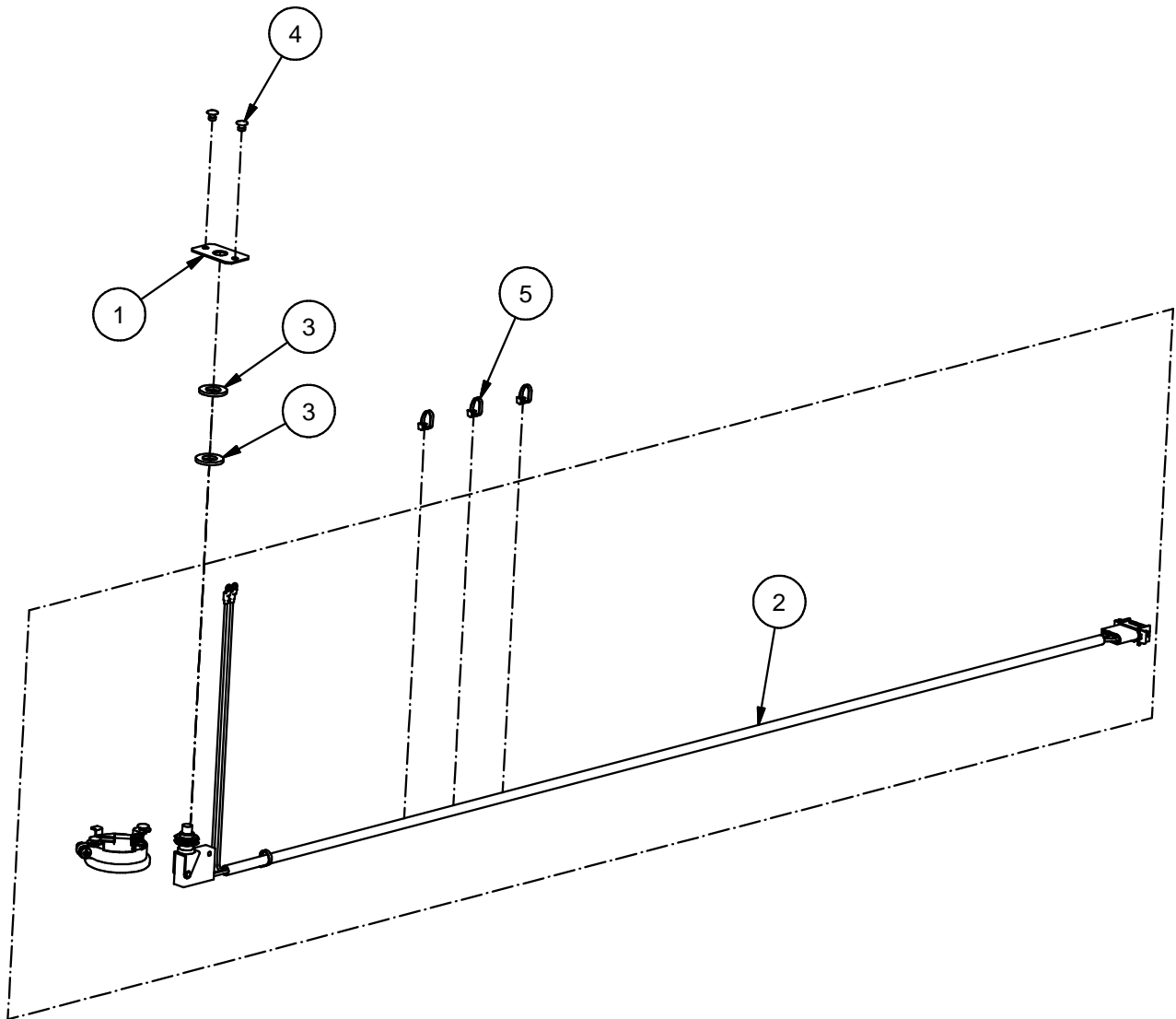


Fig.	Part. No.	Quantity	Description		
1	628684	1	BRACKET MICROSWITCH		
2	629351	1	MICRO SWITCH IP57		
3	561027	2	WASHER	10.5x20x2	
4	653000	4	RIVET AL/ST	4.0x7	AP/D BS
5	500317	3	CABLE TIE	200x4.6	WHITE



Parts Replacements List

603114
SIDE SUPPORT BACKREST
9000

Valid from 051027 to

Doc. R1-603114

Date 100518

Rev.

Rev.Date

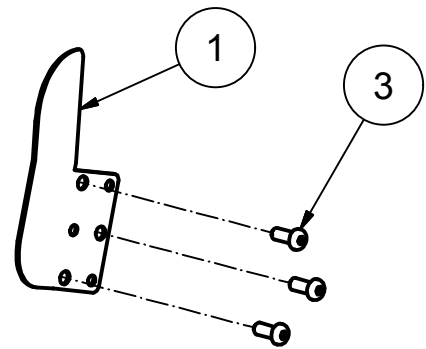
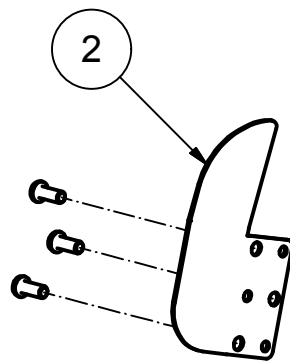


Fig.	Part. No.	Quantity	Description		
1	628868	1	SIDE SUPPORT LEFT		
2	628869	1	SIDE SUPPORT RIGHT		
3	650059	6	SCREW K6S	M8x20	ZN 10.9
4	673294	1	CLEANING NAPKIN 3M VHB		(NOT IN EXPLODED VIEW)
5	673293	0.16 LPM	TAPE 3M 5925	W=19 MM	(NOT IN EXPLODED VIEW)



Parts Replacements List

603115
SIDE SUPPORT BACKREST QR
9000

Valid from 970813 to

Doc. R1-603115

Date 120504

Rev. 0

Rev.Date

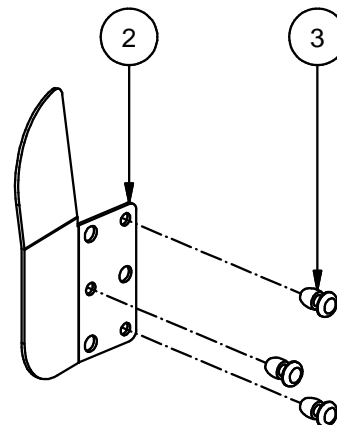
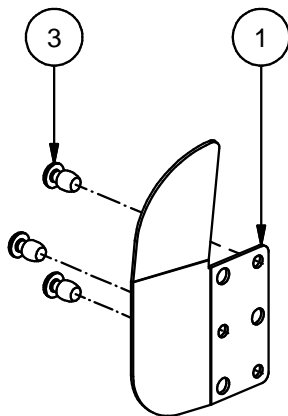


Fig.	Part. No.	Quantity	Description		
1	628869	1	SIDE SUPPORT RIGHT		
2	628868	1	SIDE SUPPORT LEFT		
3	500220	6	RIVET ST/ST	6,4x15	SP/D BS
4	673294	1	CLEANING NAPKIN 3M VHB		(NOT IN EXPLODED VIEW)
5	673293	1	TAPE 3M 5925	W=19 MM	(NOT IN EXPLODED VIEW)